

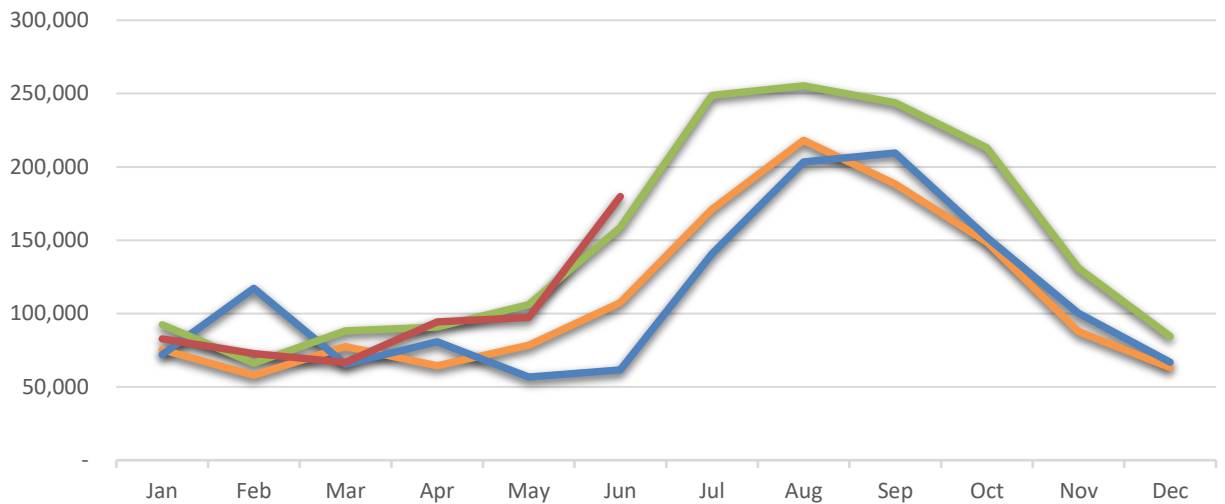
# Wall-Badlands Area Chamber of Commerce

## January - June 2022 Dashboard



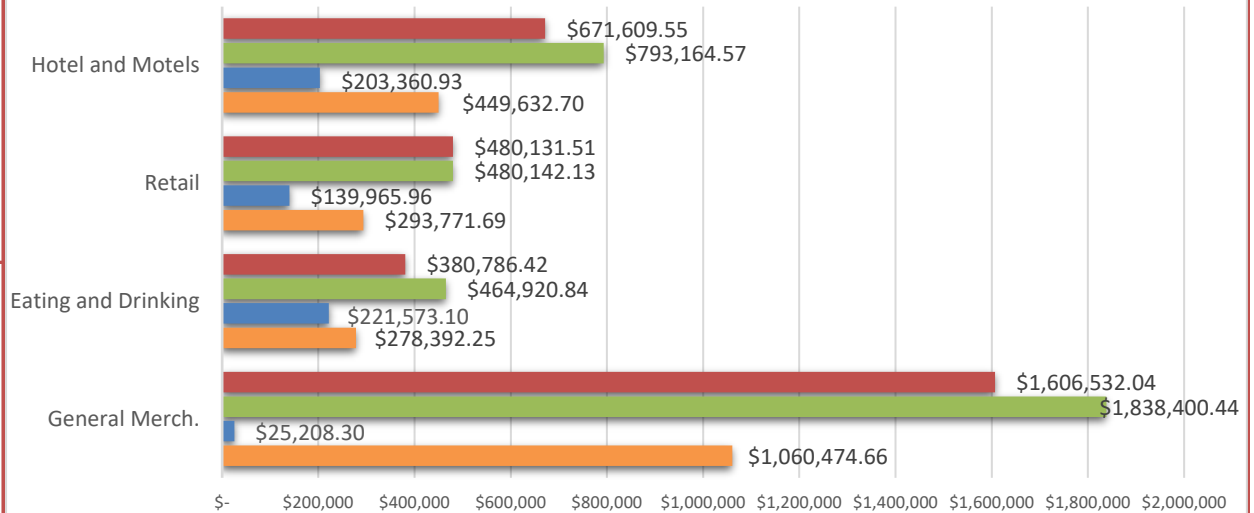
### City Sales Tax Revenue

<b>YTD 2022</b>
\$593,712.27
<b>VS. YTD 2021</b>
-1.42%
<b>Jun-22</b>
\$179,819.96
<b>VS. June 2021</b>
13.31%



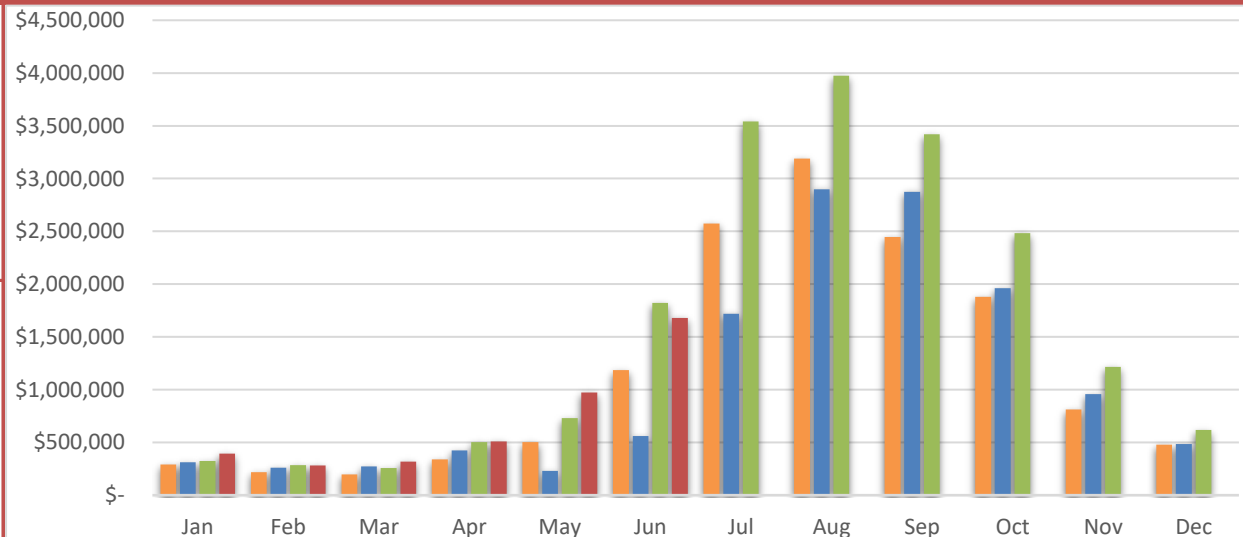
### Visitor Spending

<b>YTD 2022</b>
\$6,638,527.36
<b>VS. YTD 2021</b>
-6.8%
<b>Jun-22</b>
\$3,139,059.52
<b>VS. June 2021</b>
-12.2%



### BBB Taxable Sales

<b>YTD 2022</b>
\$4,154,545.51
<b>VS. YTD 2021</b>
5.9%
<b>Jun-22</b>
\$1,678,746.43
<b>VS. June 2021</b>
-7.9%

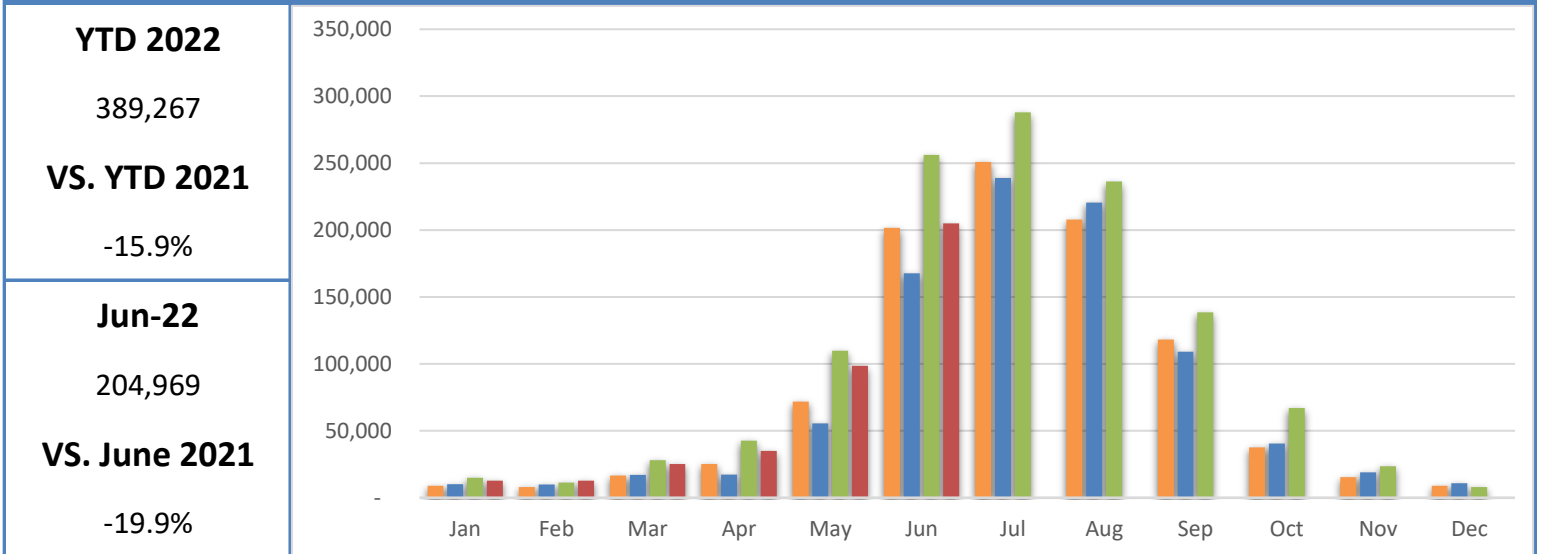


# Wall-Badlands Area Chamber of Commerce

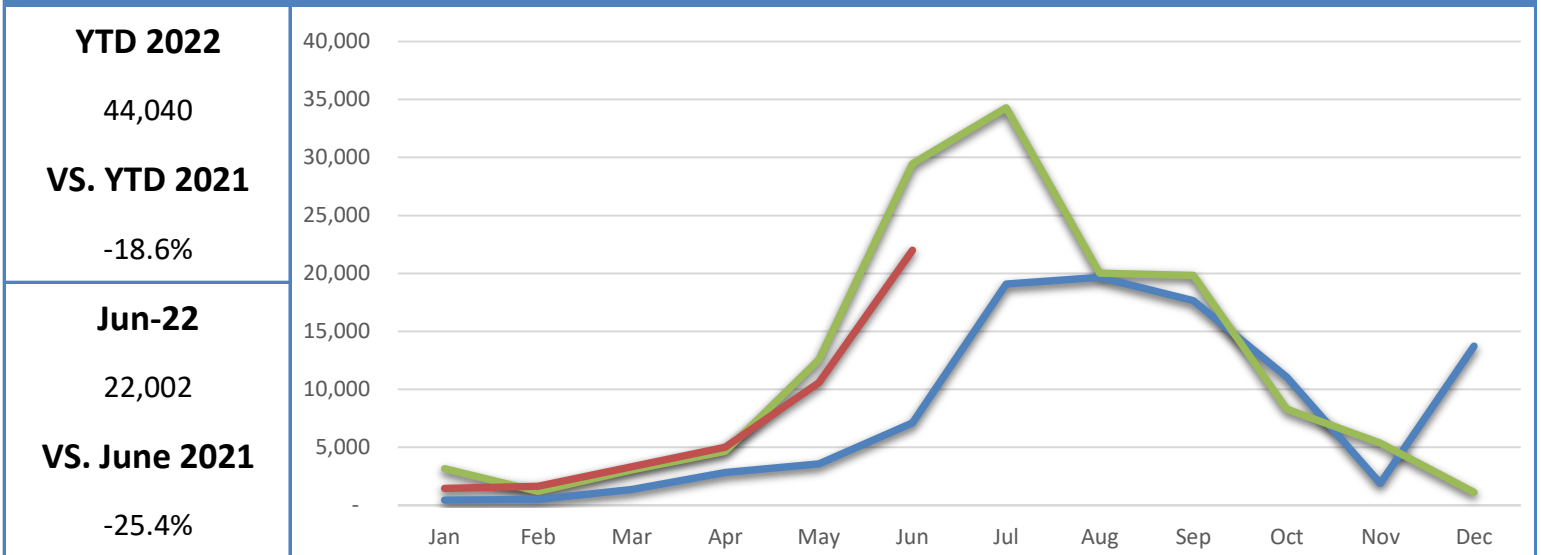
## January - June 2022 Dashboard



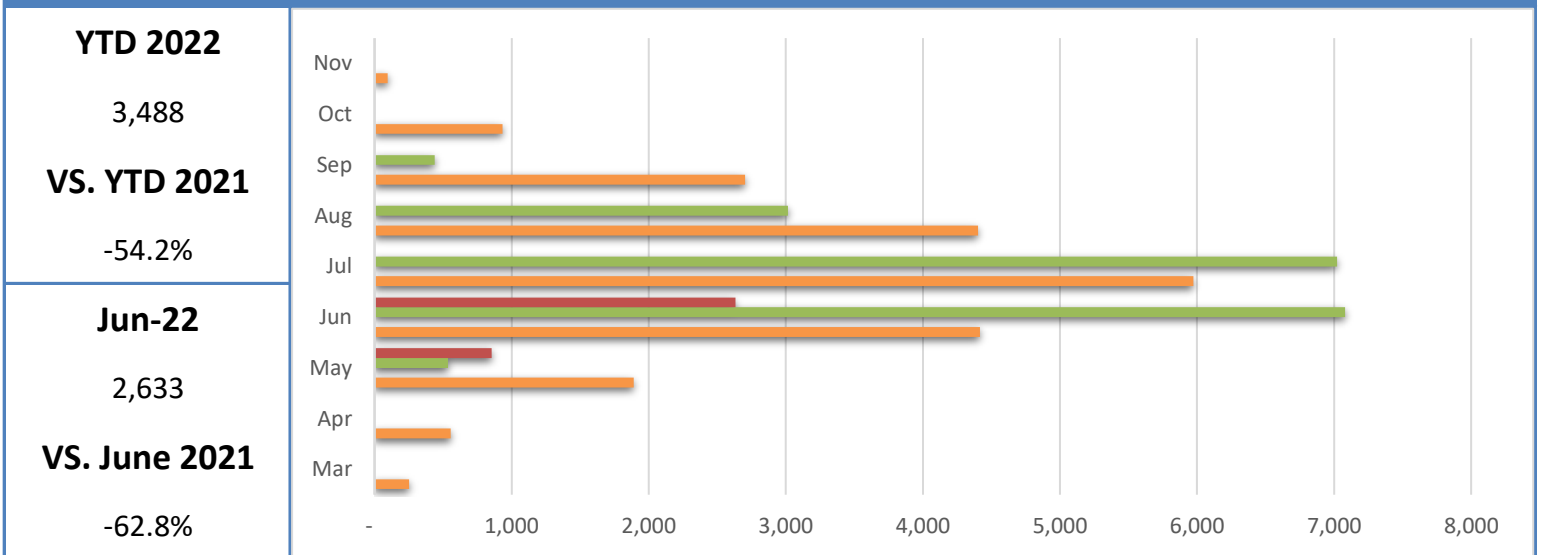
### Badlands National Park Recreational Visitation



### Minuteman Missile National Historic Site Recreational Visitation



### National Grasslands Visitor Center Recreational Visitation

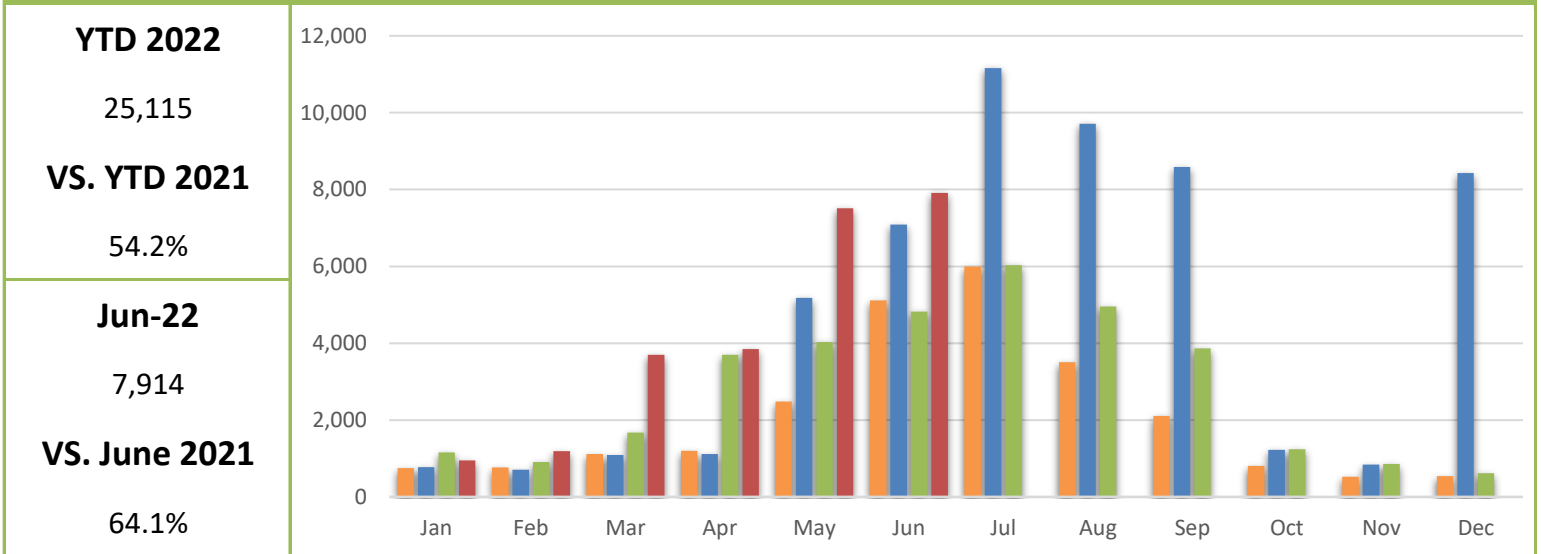


# Wall-Badlands Area Chamber of Commerce

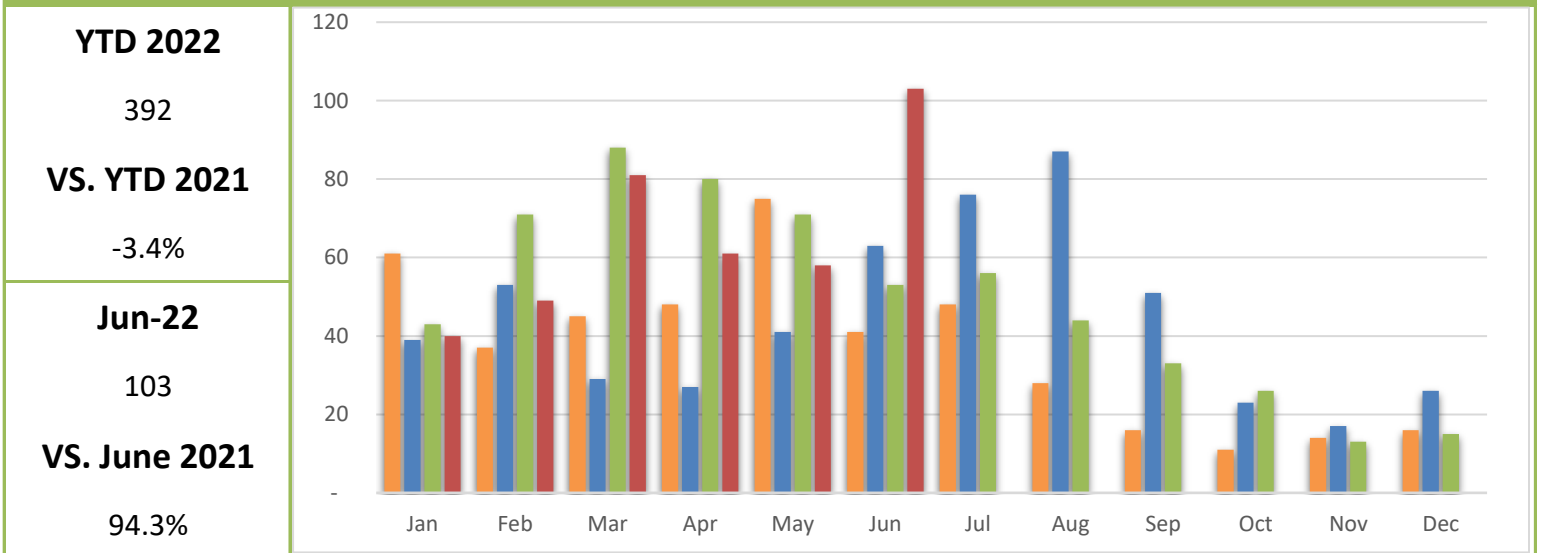
## January - June 2022 Dashboard

2019  
2020  
2021  
2022

### Wall-Badlands.com Sessions

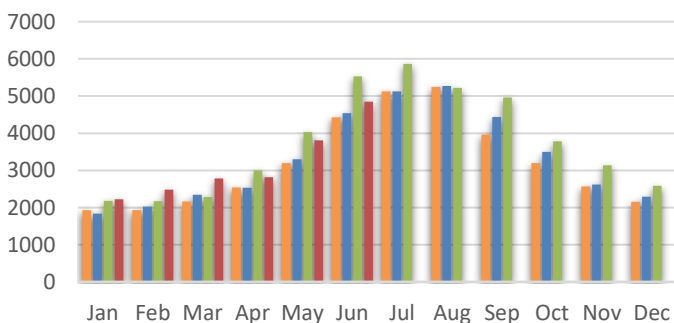


### Visitor Information Requests

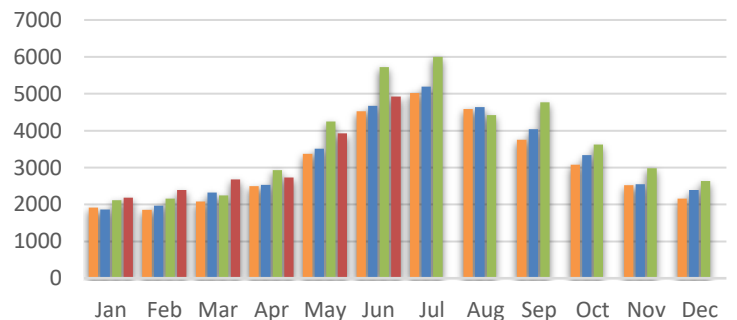


### I-90 Traffic

#### EAST BOUND TRAFFIC



#### WEST BOUND TRAFFIC



**Jun-22**

4,852

**Jun-22**

4,928

**VS. June 2021**

-12.21%

**VS. June 2021**

-13.85%

# Wall-Badlands Area Chamber of Commerce

January - June 2022 Dashboard

## Report Definitions:

**-YTD:** Year-To-Date

**-City Sales Tax Revenue:** The amount of sales, use, and municipal gross receipts tax paid to the city per month.

**-Visitor Spending:** Volume of general taxable sales reported by Tourism-related businesses.

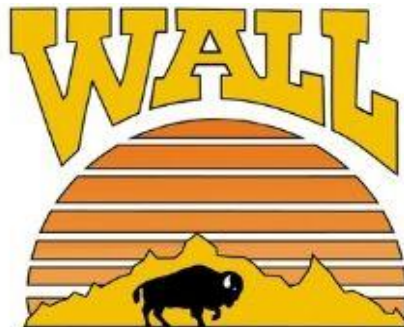
**-BBB Taxable Sales:** The one percent municipal gross receipts tax (BBB tax) is imposed on alcoholic beverages, eating establishments, lodging accommodations, admissions to places of amusement, athletic and cultural events.

**-Recreational Visits:** The total number of visitors through government attractions.

**-Web Sessions:** User interactions with the Chamber website that take place within any given time frame. A single session can contain multiple page views.

**-Information Requests:** Information requests are defined as the number of visitors who request printed or digital download information from the Wall-Badlands Area Chamber of Commerce office.

**-I 90 Traffic:** The average number of vehicles that travel on SD Interstate 90 in a day.



**Wall-Badlands Area Chamber of Commerce**

501 Main St. Wall, SD 57790

PO Box 527

wallchamber@gwtc.net