

# Wall-Badlands Area Chamber of Commerce

## January - September 2021 Dashboard

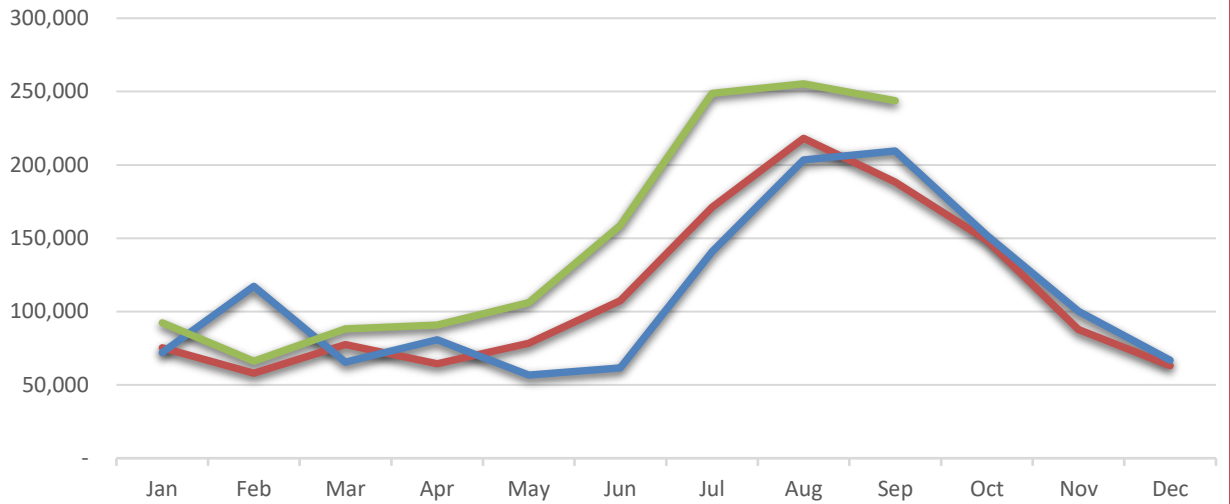
2019

2020

2021

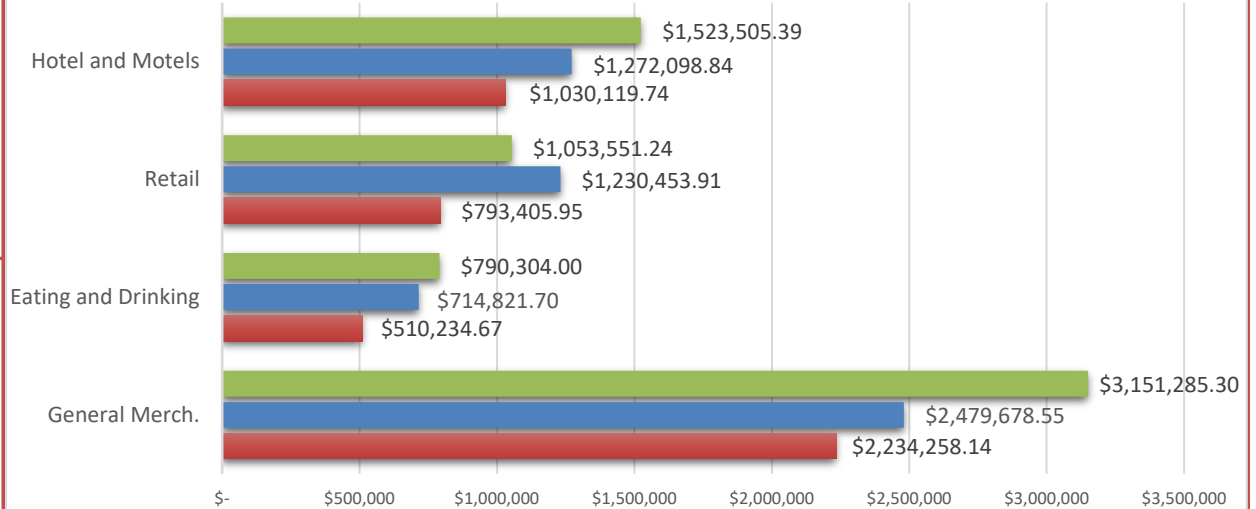
### City Sales Tax Revenue

<b>YTD 2021</b>
\$1,350,262.54
<b>VS. YTD 2020</b>
34.01%
<b>Sep-21</b>
\$243,809.34
<b>VS. Sept. 2020</b>
16.38%



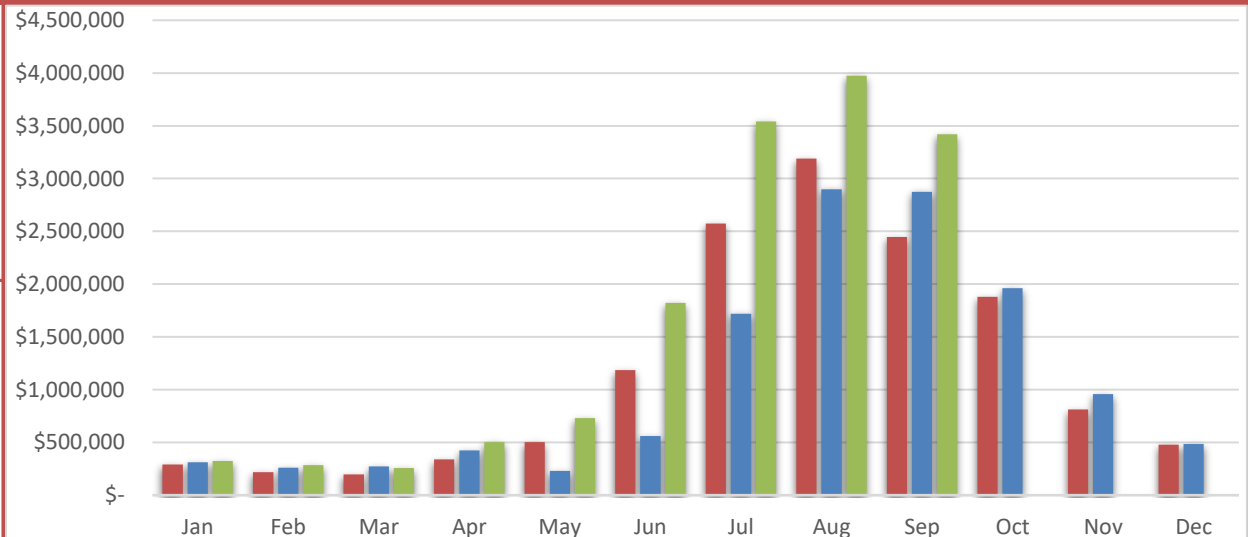
### Visitor Spending

<b>YTD 2021</b>
\$16,528,483.52
<b>VS. YTD 2020</b>
70.0%
<b>Sep-21</b>
\$6,518,645.93
<b>VS. Sept. 2020</b>
14.4%



### BBB Taxable Sales

<b>YTD 2021</b>
\$14,860,040.41
<b>VS. YTD 2020</b>
55.6%
<b>Sep-21</b>
\$3,419,936.44
<b>VS. Sept. 2020</b>
19.0%

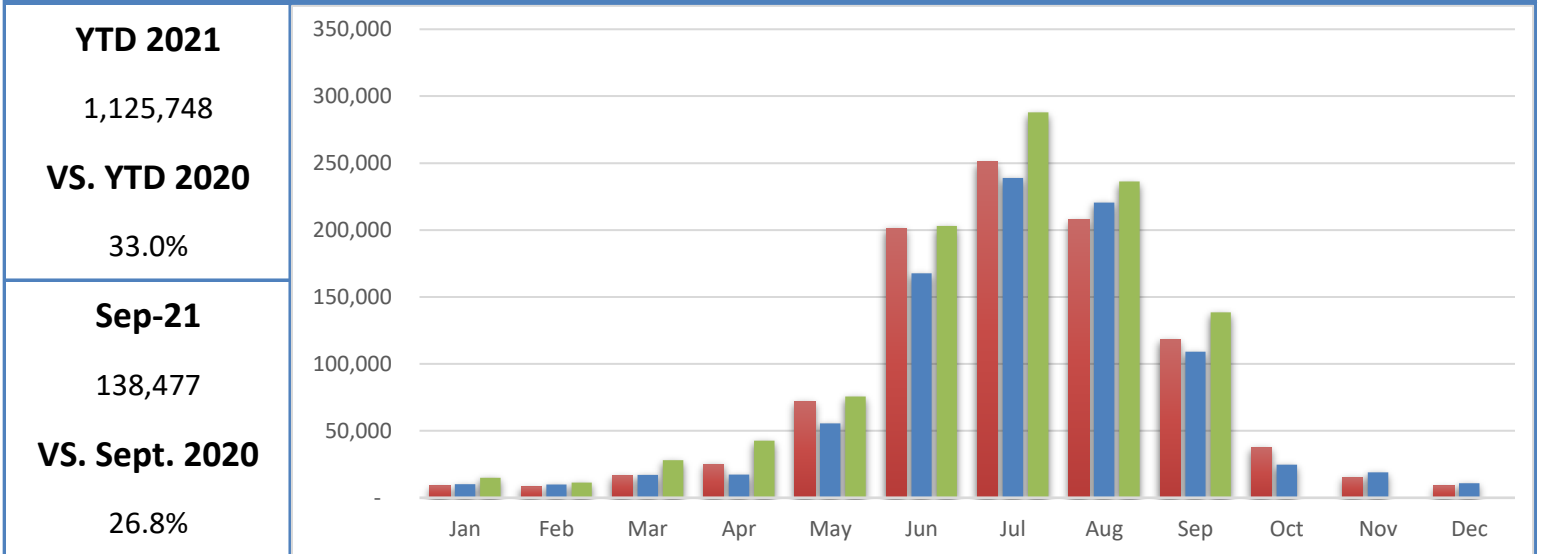


# Wall-Badlands Area Chamber of Commerce

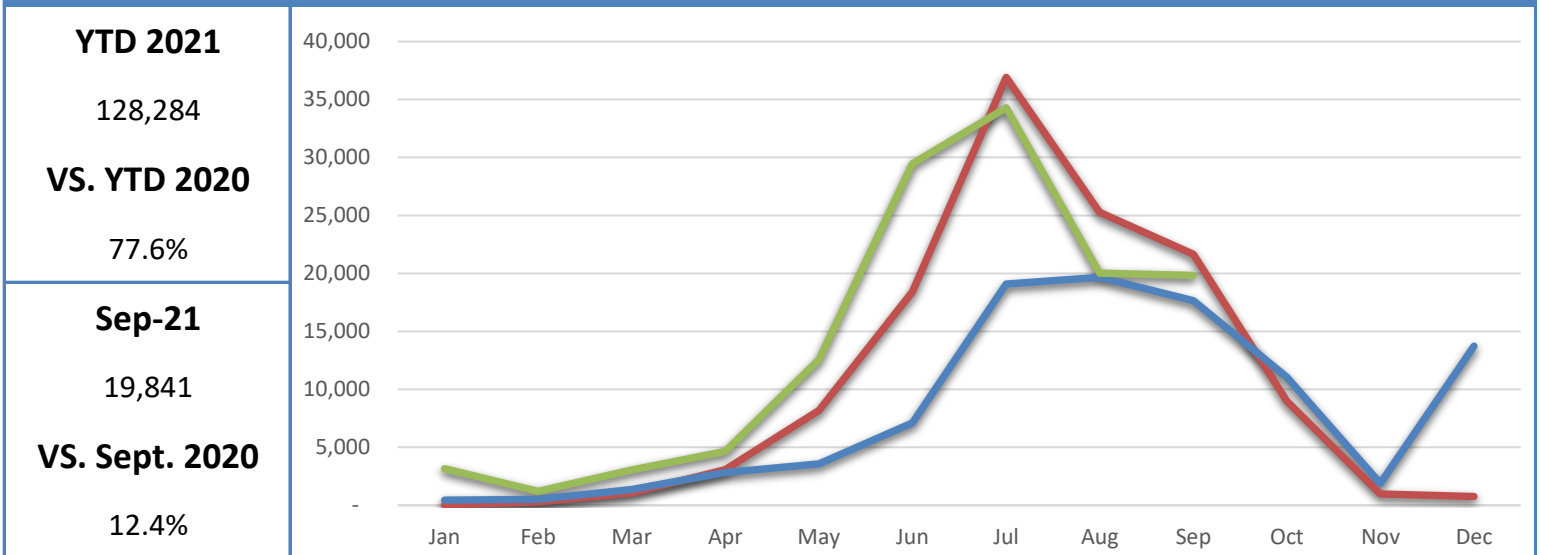
## January - September 2021 Dashboard

2019  
2020  
2021

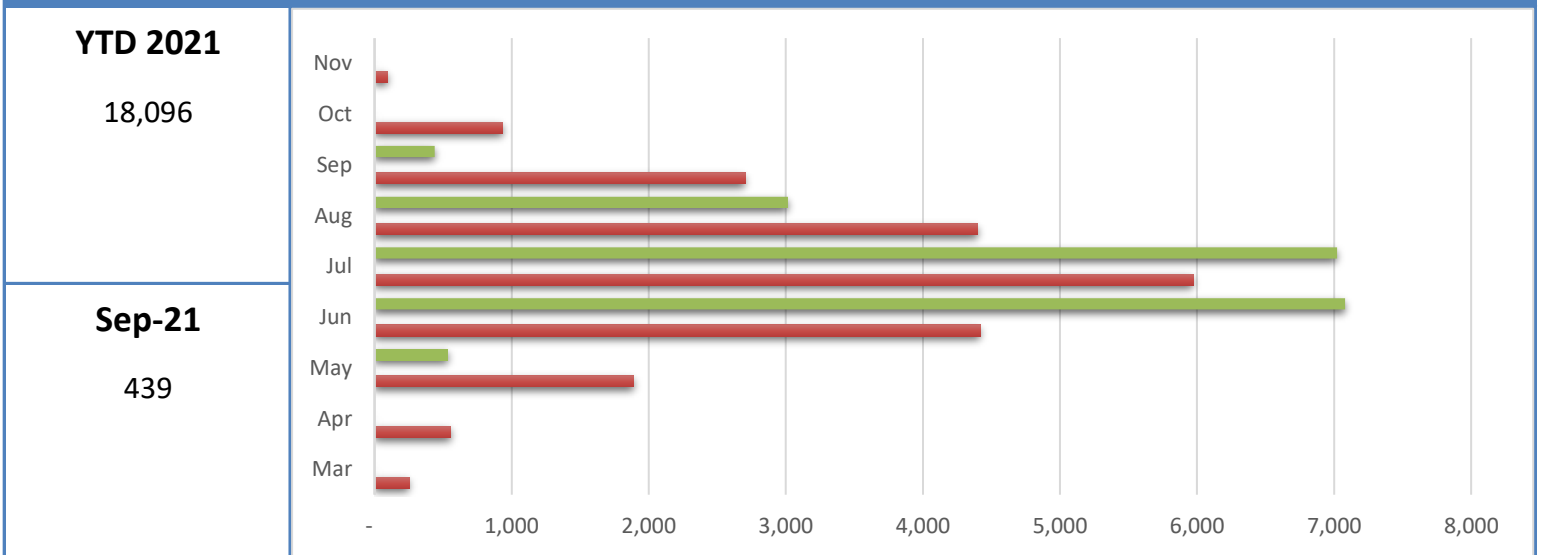
### Badlands National Park Recreational Visitation



### Minuteman Missile National Historic Site Recreational Visitation



### National Grasslands Visitor Center Recreational Visitation



# Wall-Badlands Area Chamber of Commerce

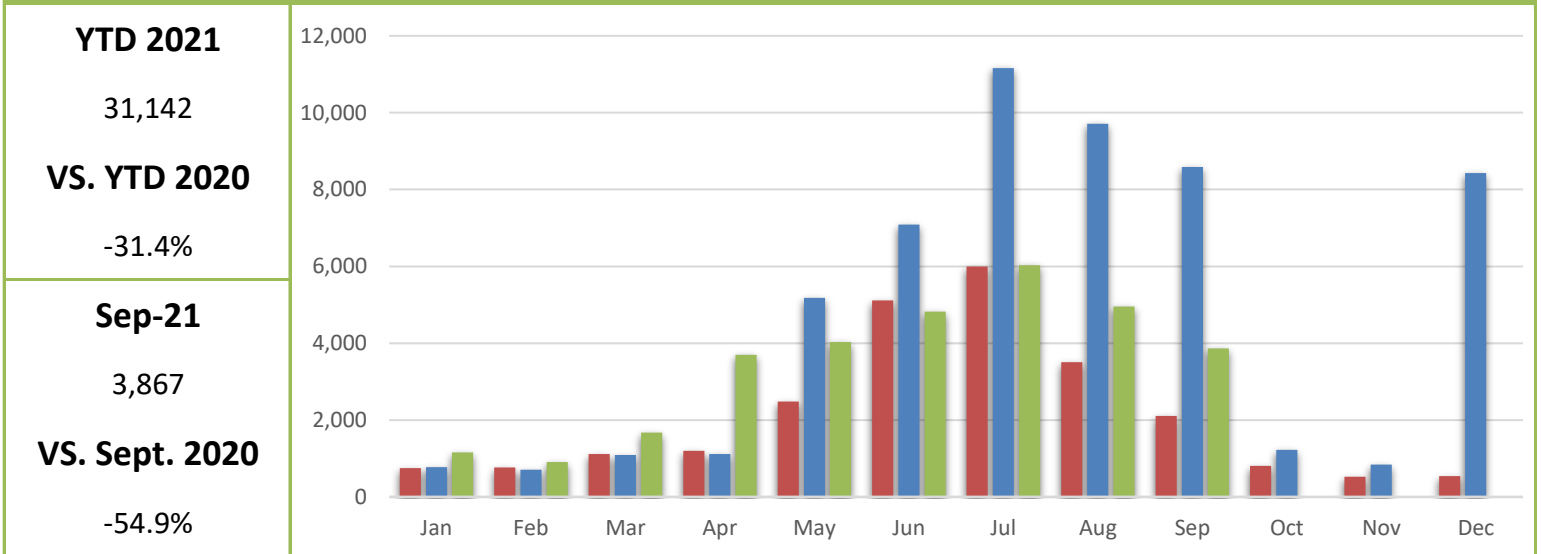
## January - September 2021 Dashboard

2019

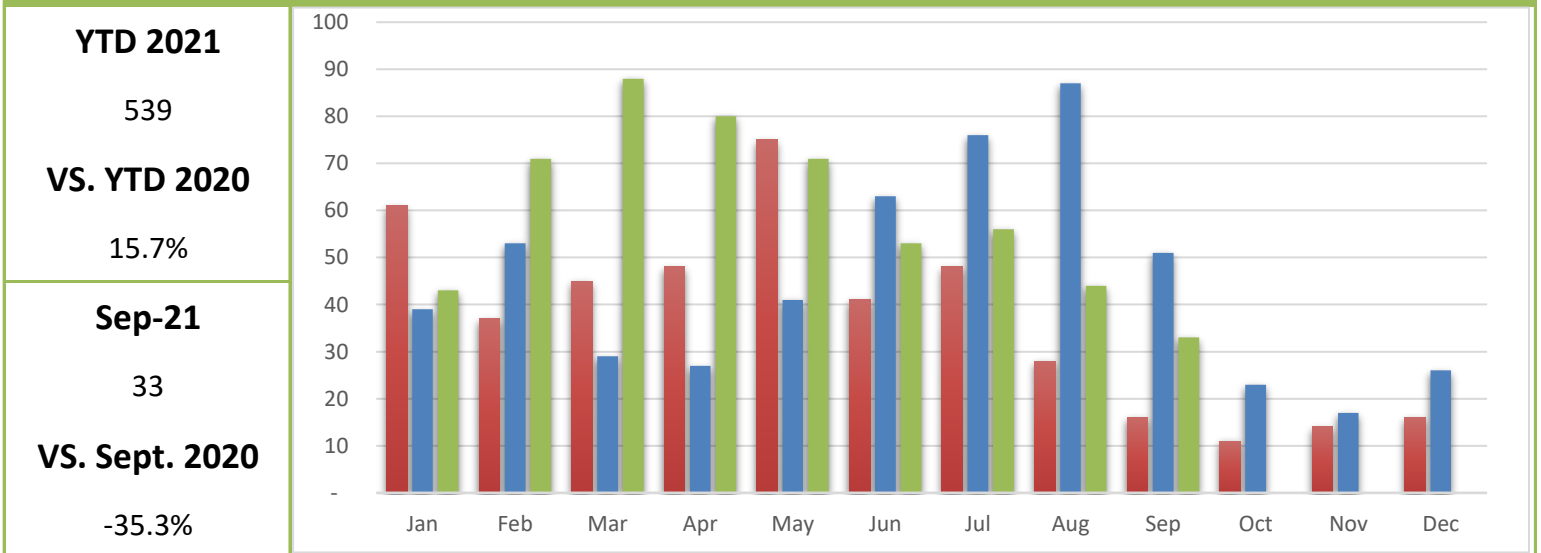
2020

2021

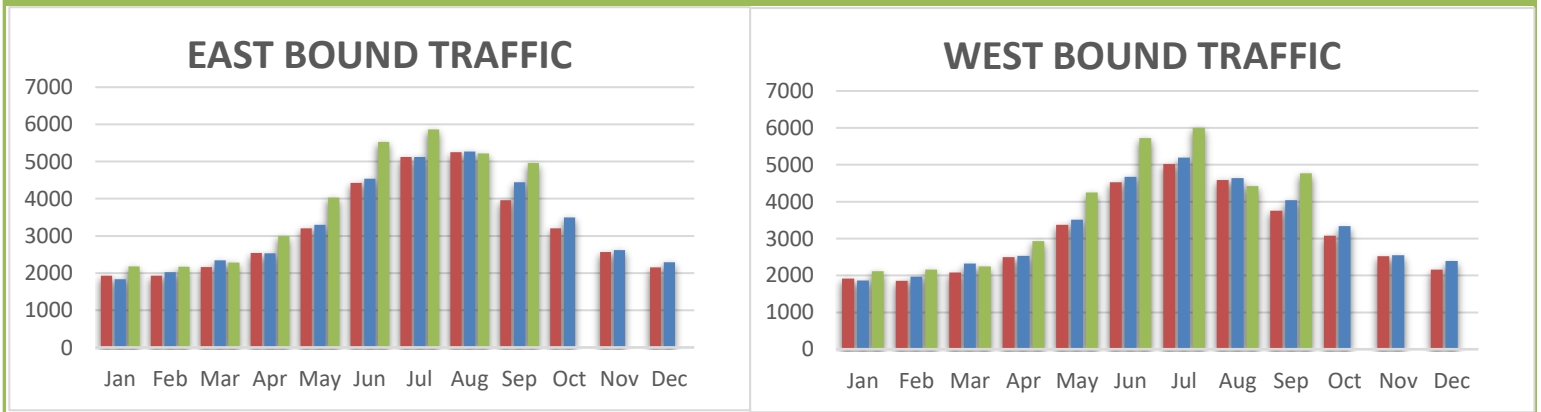
### Wall-Badlands.com Sessions



### Visitor Information Requests



### I-90 Traffic



<b>Sep-21</b>	4,961	<b>Sep-21</b>	4,768
<b>VS. Sept. 2020</b>	11.76%	<b>VS. Sept. 2020</b>	18.02%

# Wall-Badlands Area Chamber of Commerce

January - September 2021 Dashboard

## Report Definitions:

**-YTD:** Year-To-Date

**-City Sales Tax Revenue:** The amount of sales, use, and municipal gross receipts tax paid to the city per month.

**-Visitor Spending:** Volume of general taxable sales reported by Tourism-related businesses.

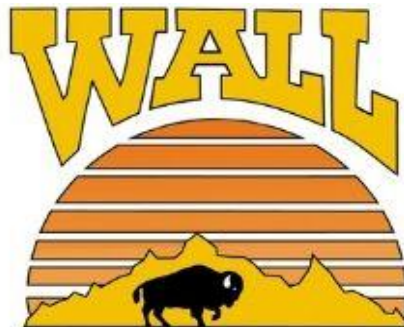
**-BBB Taxable Sales:** The one percent municipal gross receipts tax (BBB tax) is imposed on alcoholic beverages, eating establishments, lodging accommodations, admissions to places of amusement, athletic and cultural events.

**-Recreational Visits:** The total number of visitors through government attractions.

**-Web Sessions:** User interactions with the Chamber website that take place within any given time frame. A single session can contain multiple page views.

**-Information Requests:** Information requests are defined as the number of visitors who request printed information from the Wall-Badlands Area Chamber of Commerce office.

**-I 90 Traffic:** The average number of vehicles that travel on SD Interstate 90 in a day.



**Wall-Badlands Area Chamber of Commerce**

501 Main St. Wall, SD 57790

PO Box 527

wallchamber@gwtc.net