

# Wall-Badlands Area Chamber of Commerce

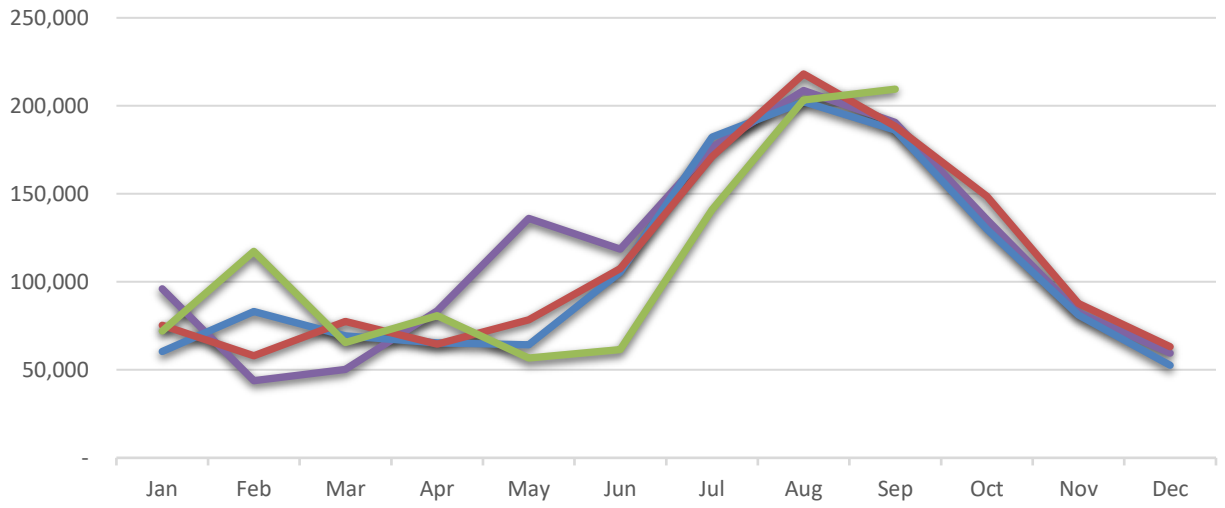
## January - September 2020 Dashboard



### City Sales Tax Revenue

**YTD 2020**  
\$1,007,574.76  
**VS. YTD 2019**  
-3.0%

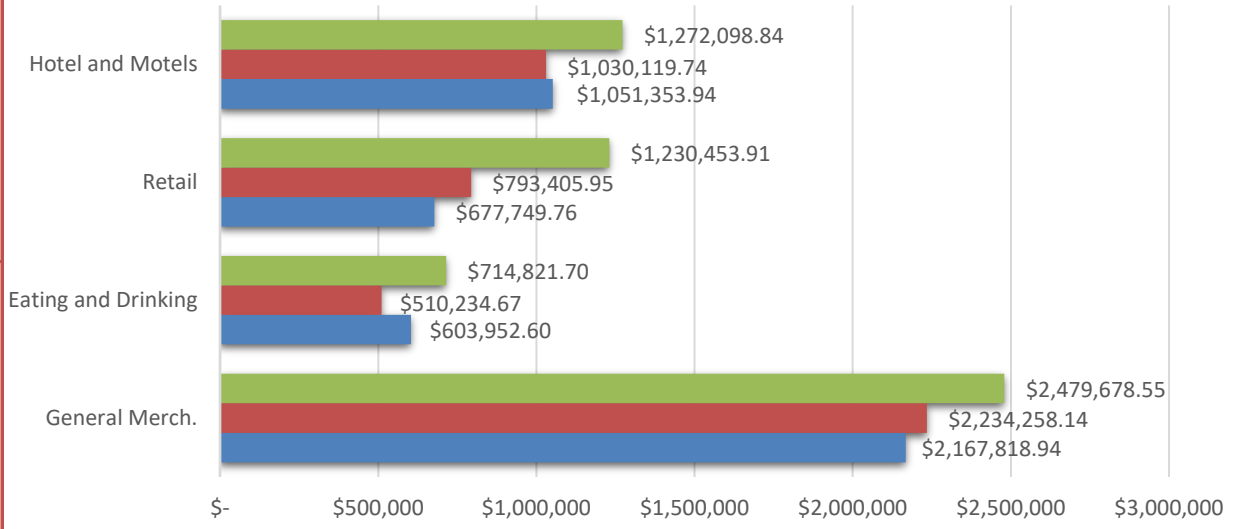
**Sep-20**  
\$209,488.90  
**VS. Sept 2019**  
11.2%



### Visitor Spending

**YTD 2020**  
\$16,528,483.52  
**VS. YTD 2019**  
-11.9%

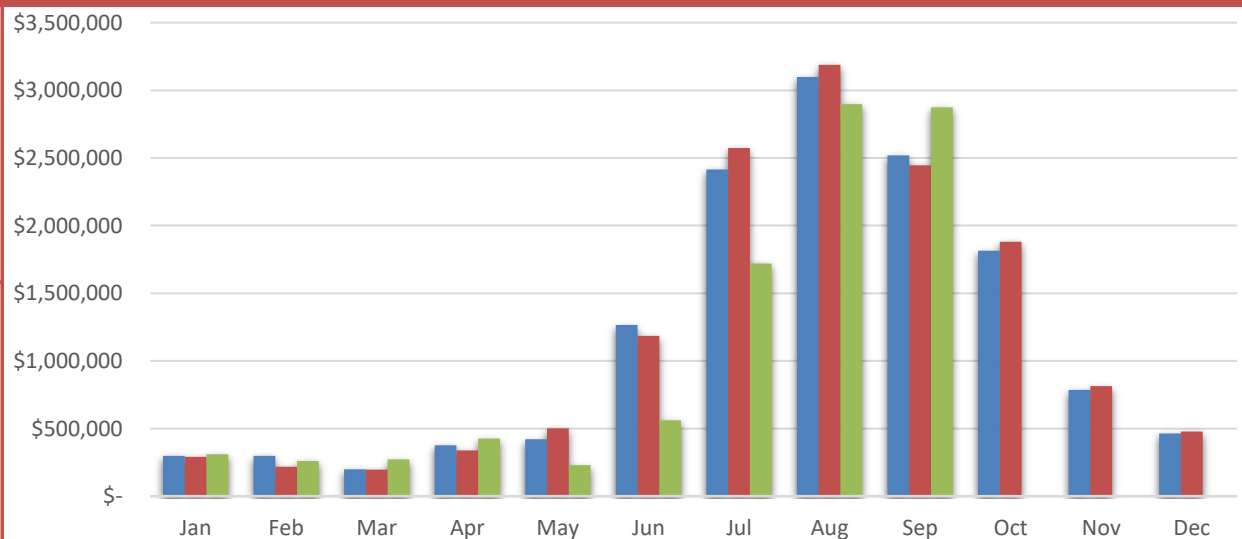
**Sep-20**  
\$5,697,053.00  
**VS. Sept 2019**  
24.7%



### BBB Taxable Sales

**YTD 2020**  
\$9,550,555.63  
**VS. YTD 2019**  
-12.7%

**Sep-20**  
\$2,874,539.20  
**VS. Sept 2019**  
17.5%

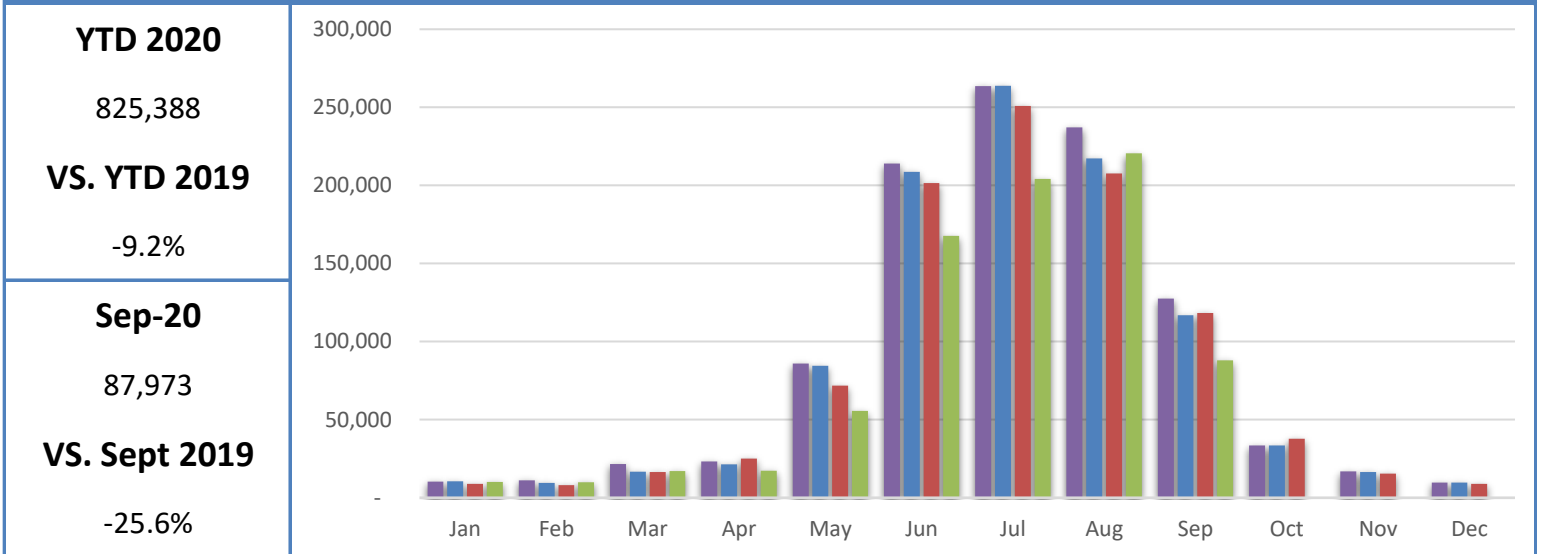


# Wall-Badlands Area Chamber of Commerce

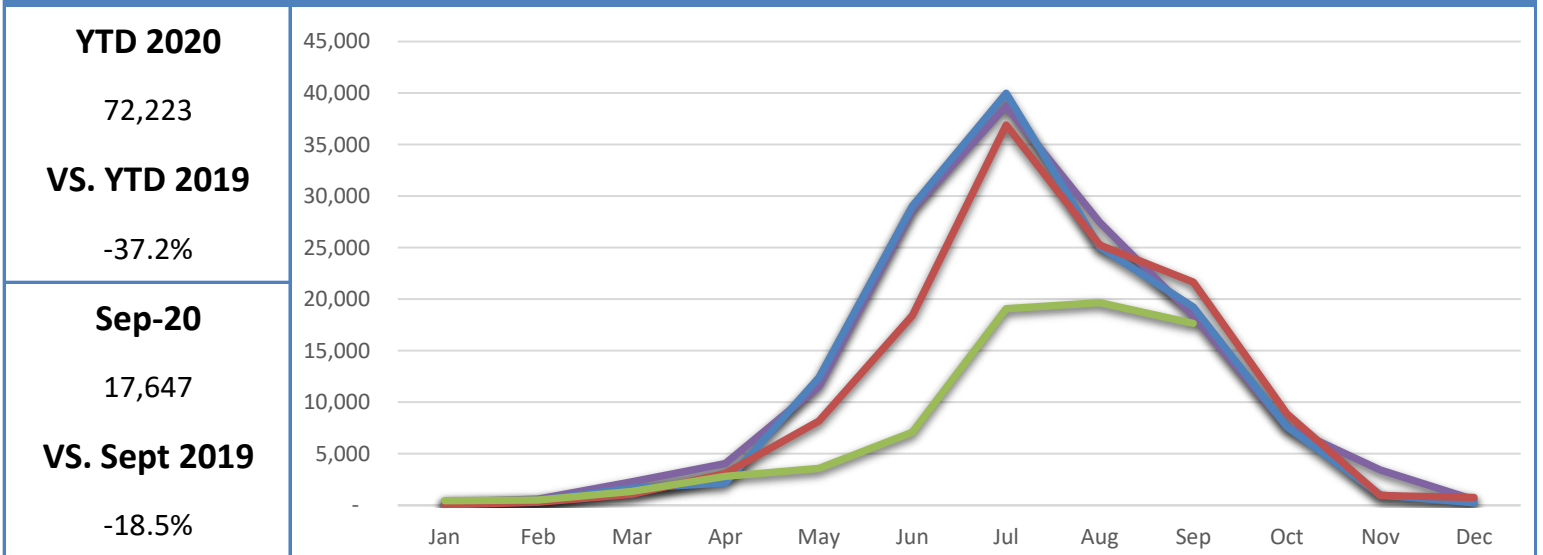
## January - September 2020 Dashboard



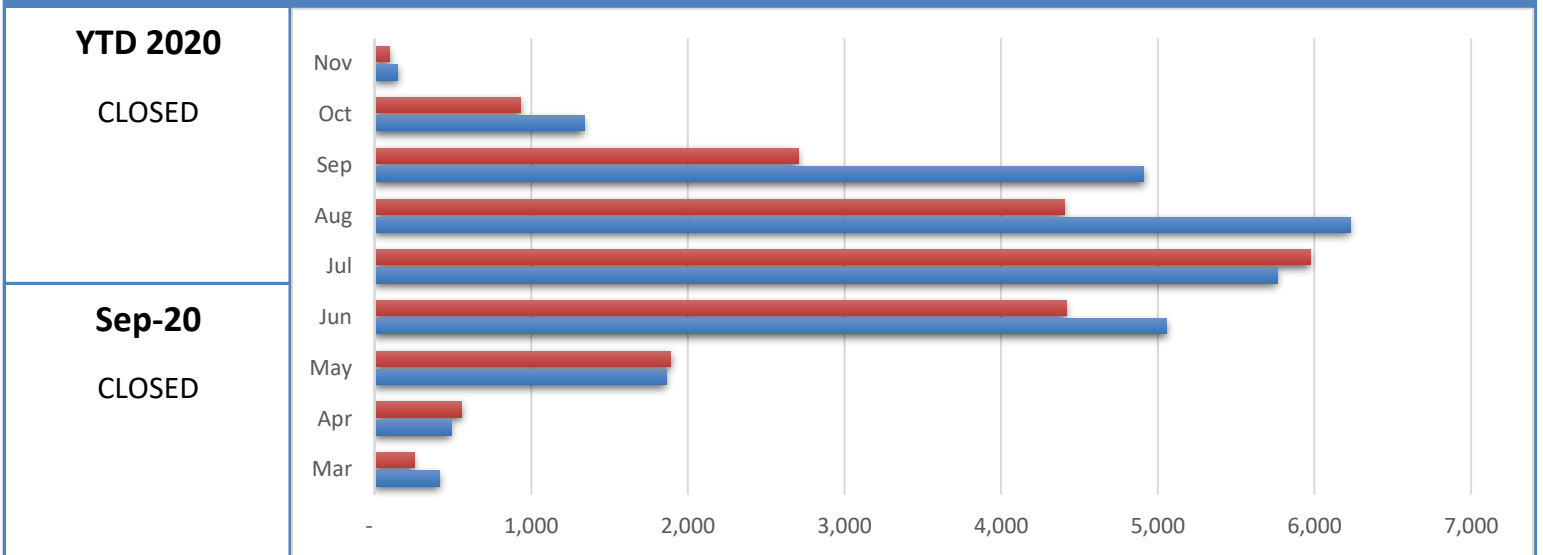
### Badlands National Park Recreational Visitation



### Minuteman Missile National Historic Site Recreational Visitation



### National Grasslands Visitor Center Recreational Visitation

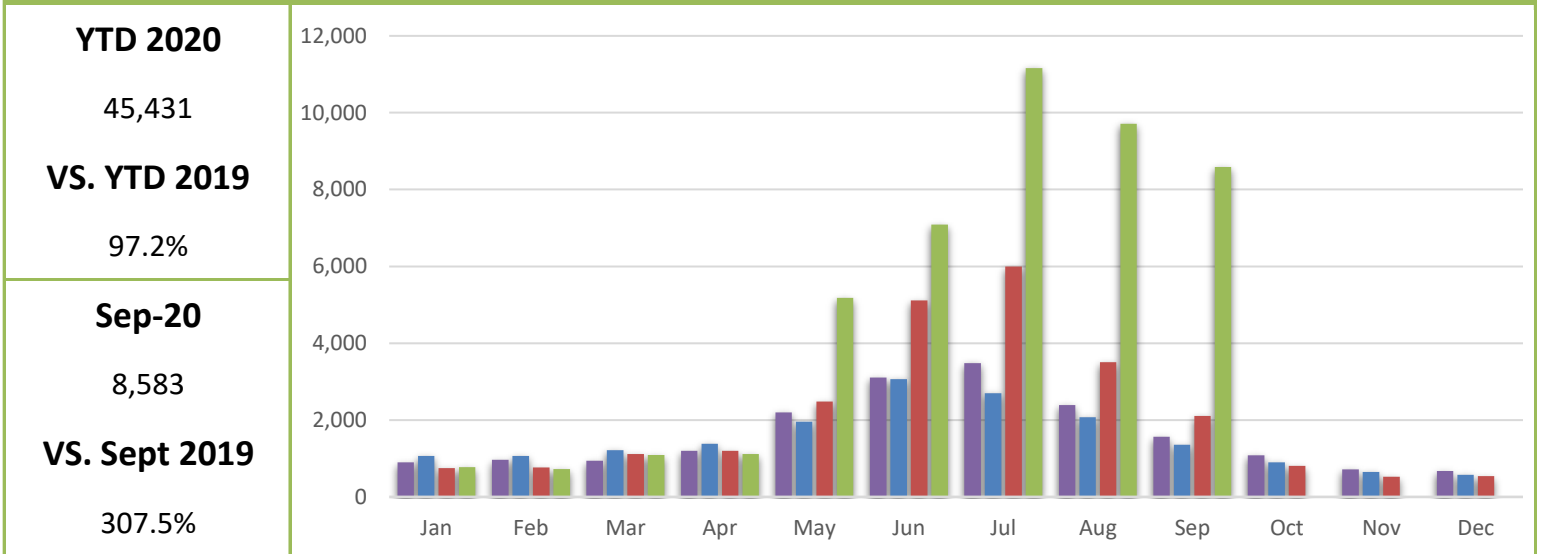


# Wall-Badlands Area Chamber of Commerce

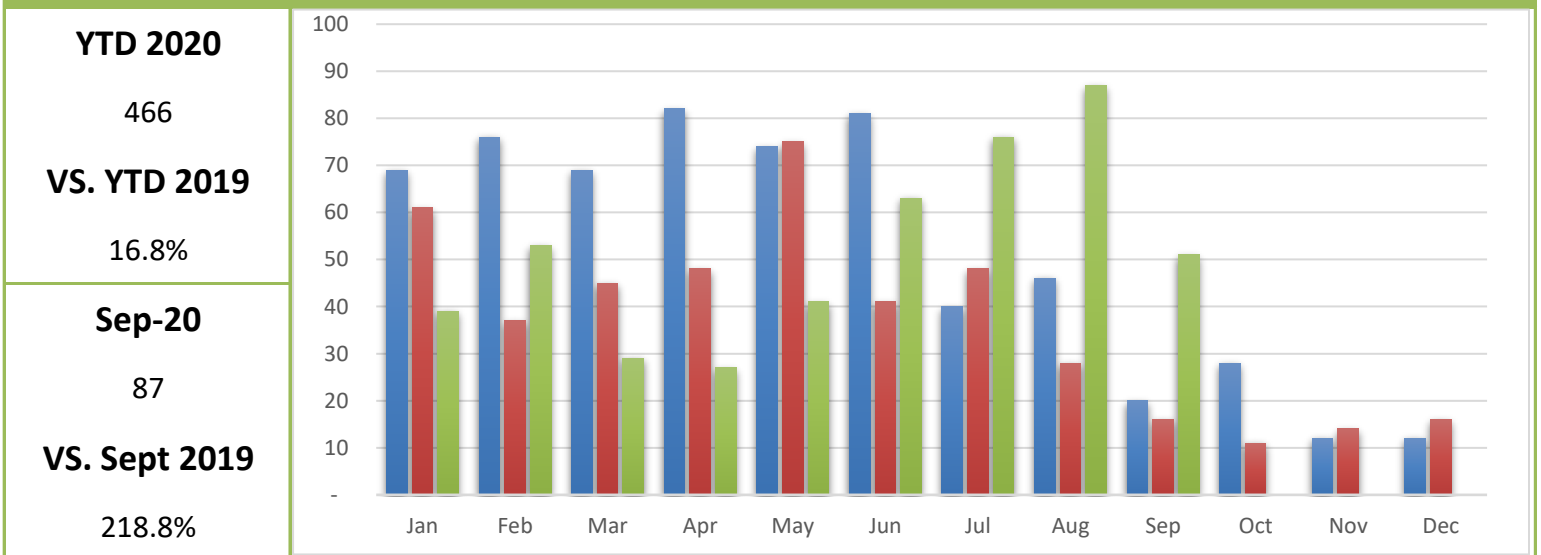
## January - September 2020 Dashboard



### Wall-Badlands.com Sessions

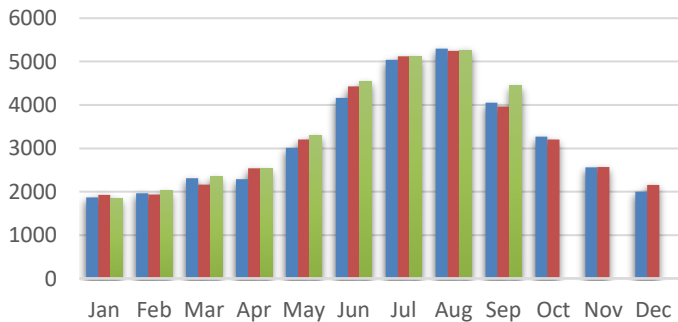


### Visitor Information Requests

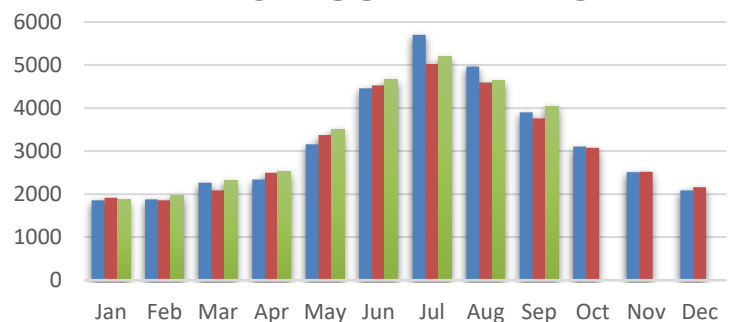


### I-90 Traffic

#### EAST BOUND TRAFFIC



#### WEST BOUND TRAFFIC



<b>Sep-20</b>	4,439
<b>VS. Sept 2019</b>	12.01%

<b>Sep-20</b>	4,040
<b>VS. Sept 2019</b>	7.5%

# Wall-Badlands Area Chamber of Commerce

January - September 2020 Dashboard

## Report Definitions:

**-YTD:** Year-To-Date

**-City Sales Tax Revenue:** The amount of sales, use, and municipal gross receipts tax paid to the city per month.

**-Visitor Spending:** Volume of general taxable sales reported by Tourism-related businesses.

**-BBB Taxable Sales:** The one percent municipal gross receipts tax (BBB tax) is imposed on alcoholic beverages, eating establishments, lodging accommodations, admissions to places of amusement, athletic and cultural events.

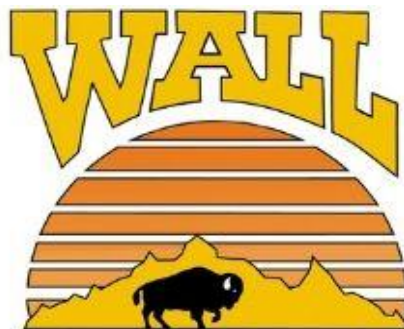
**-Recreational Visits:** The total number of visitors through government attractions.

**-Web Sessions:** User interactions with the Chamber website that take place within any given time frame. A single session can contain multiple page views.

**-Information Requests:** Information requests are defined as the number of visitors who request printed information from the Wall-Badlands Area Chamber of Commerce office.

**-Occupancy:** Rooms sold divided by rooms available multiplied by 100. Occupancy is always expressed as a percentage of rooms occupied from the first calendar day of the month to the last calendar day of the month as compared to the same month the previous year.

**-I 90 Traffic:** The average number of vehicles that travel on SD Interstate 90 in a day.



**Wall-Badlands Area Chamber of Commerce**

501 Main St. Wall, SD 57790

PO Box 527

wallchamber@gwtc.net