

# Wall-Badlands Area Chamber of Commerce

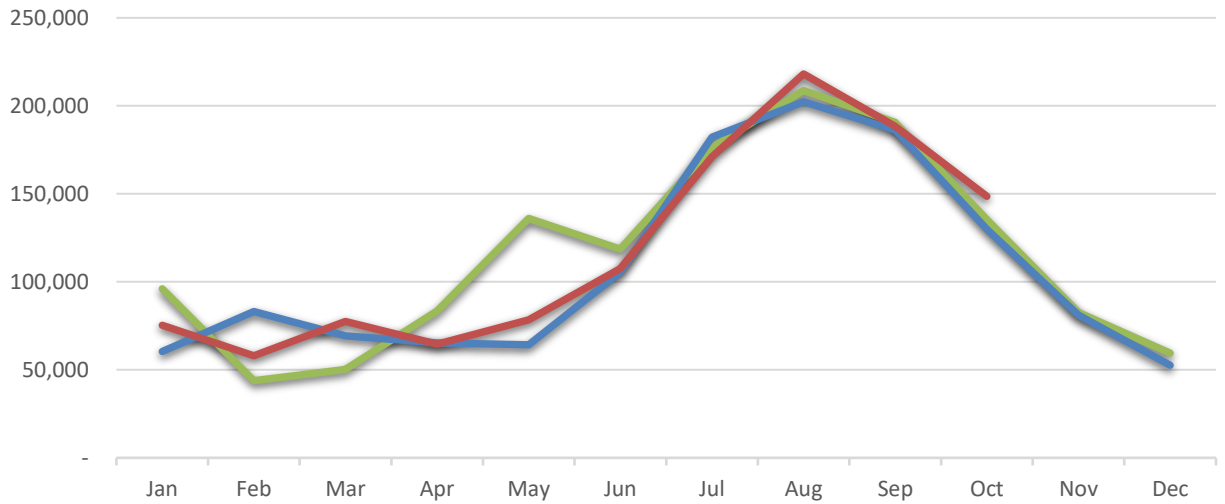
Dashboard January 2019 - October 2019



## City Sales Tax Revenue

**YTD 2019**  
\$1,187,501.43  
**VS. YTD 2018**  
-3.4%

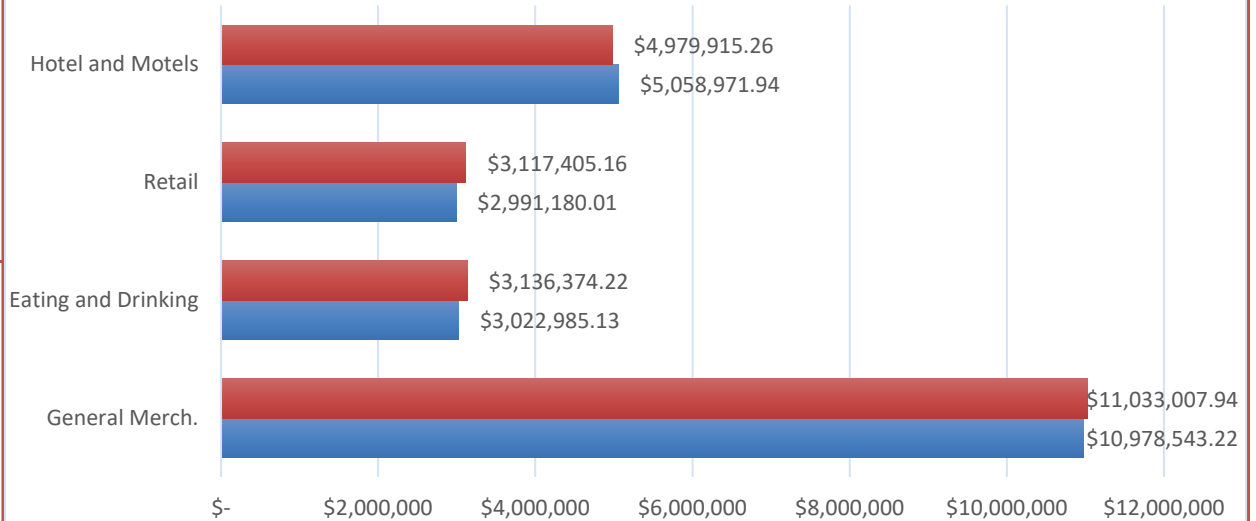
**Oct-19**  
\$148,571.42  
**VS. Oct 2018**  
14.4%



## Visitor Spending

**YTD 2019**  
\$22,266,702.58  
**VS. YTD 2018**  
1.0%

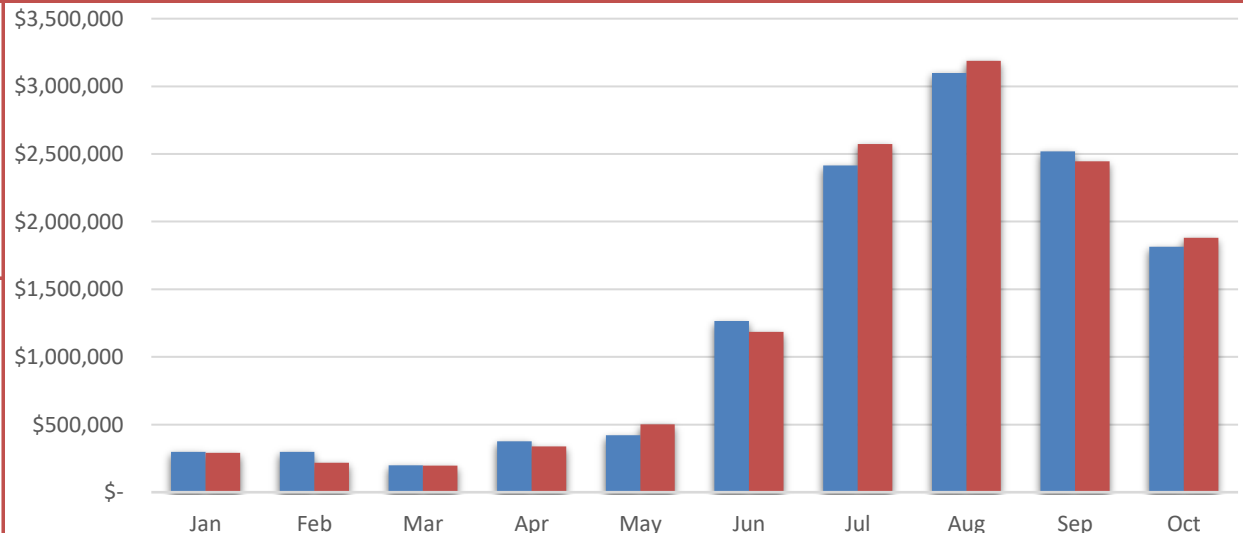
**Oct-19**  
\$3,512,405.55  
**VS. Oct 2018**  
7.5%



## BBB Taxable Sales

**YTD 2019**  
\$12,821,810.70  
**VS. YTD 2018**  
0.9%

**Oct-19**  
\$1,880,504.06  
**VS. Oct 2018**  
3.6%

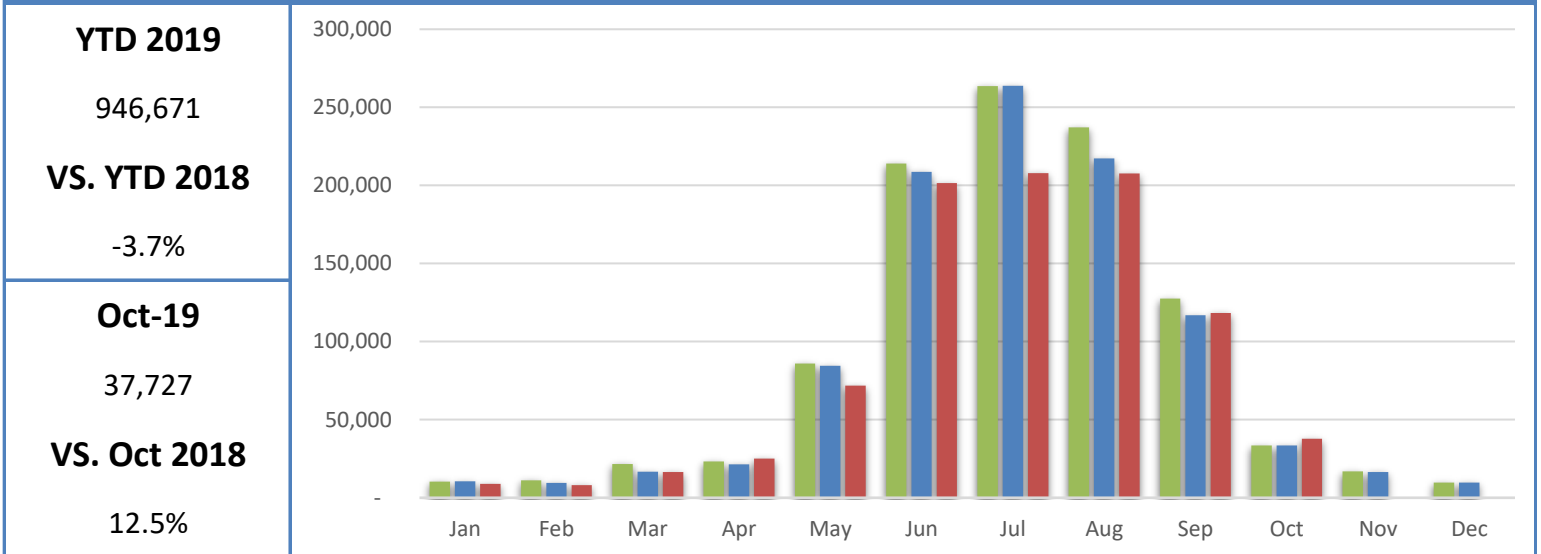


# Wall-Badlands Area Chamber of Commerce

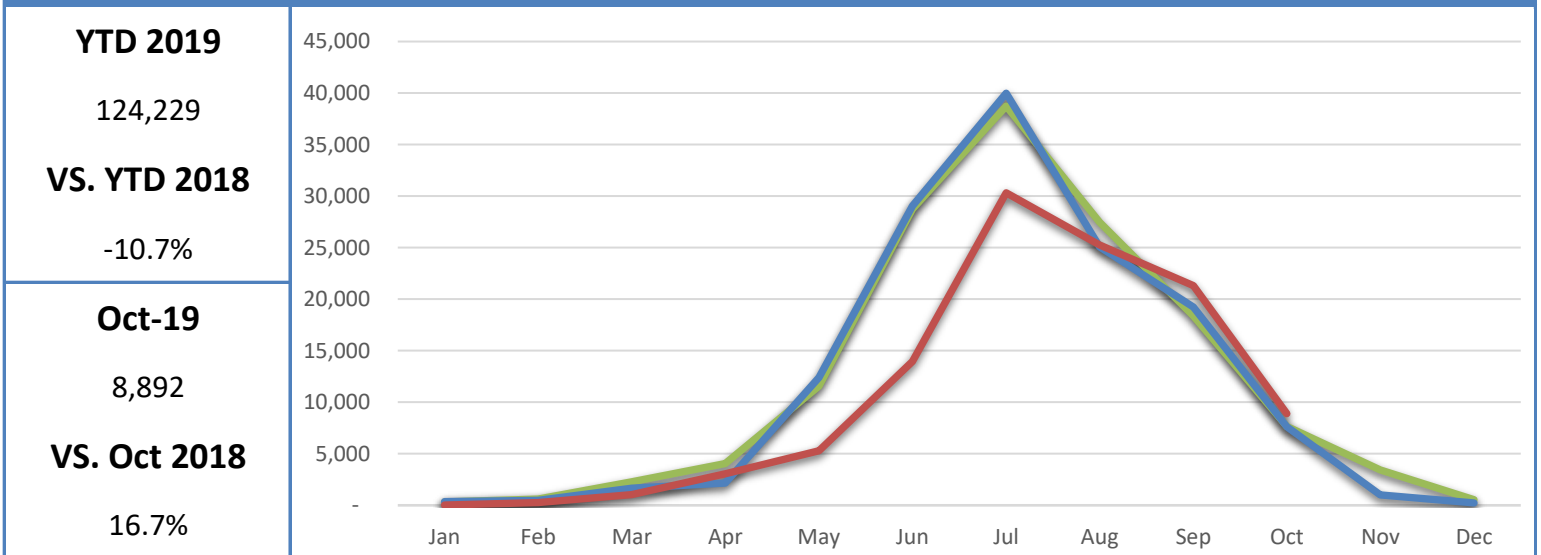
Dashboard January 2019 - October 2019



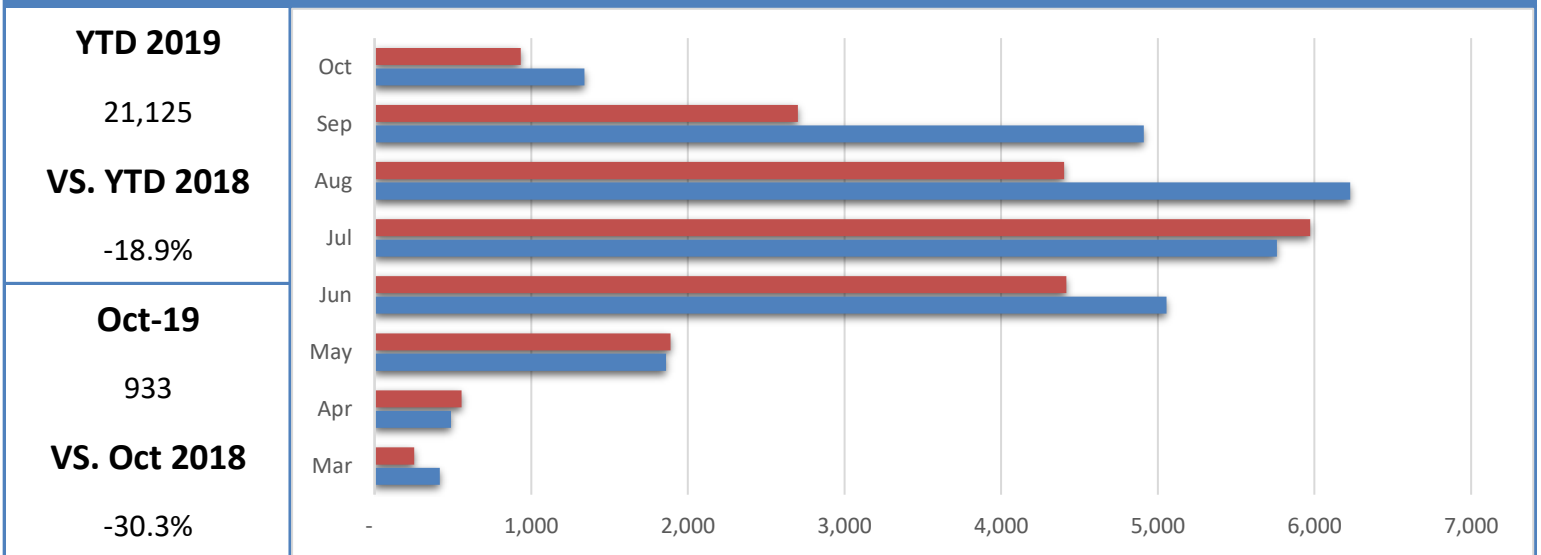
## Badlands National Park Recreational Visitation



## Minuteman Missile National Historic Site Recreational Visitation



## National Grasslands Visitor Center Visitation

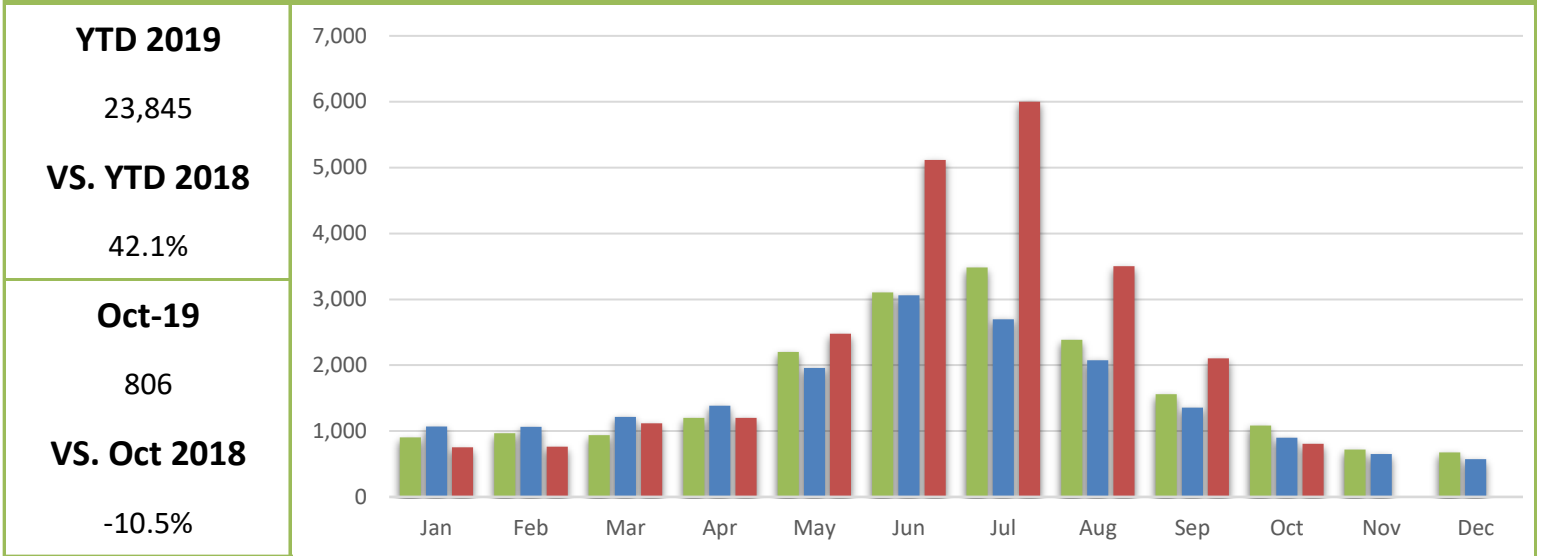


# Wall-Badlands Area Chamber of Commerce

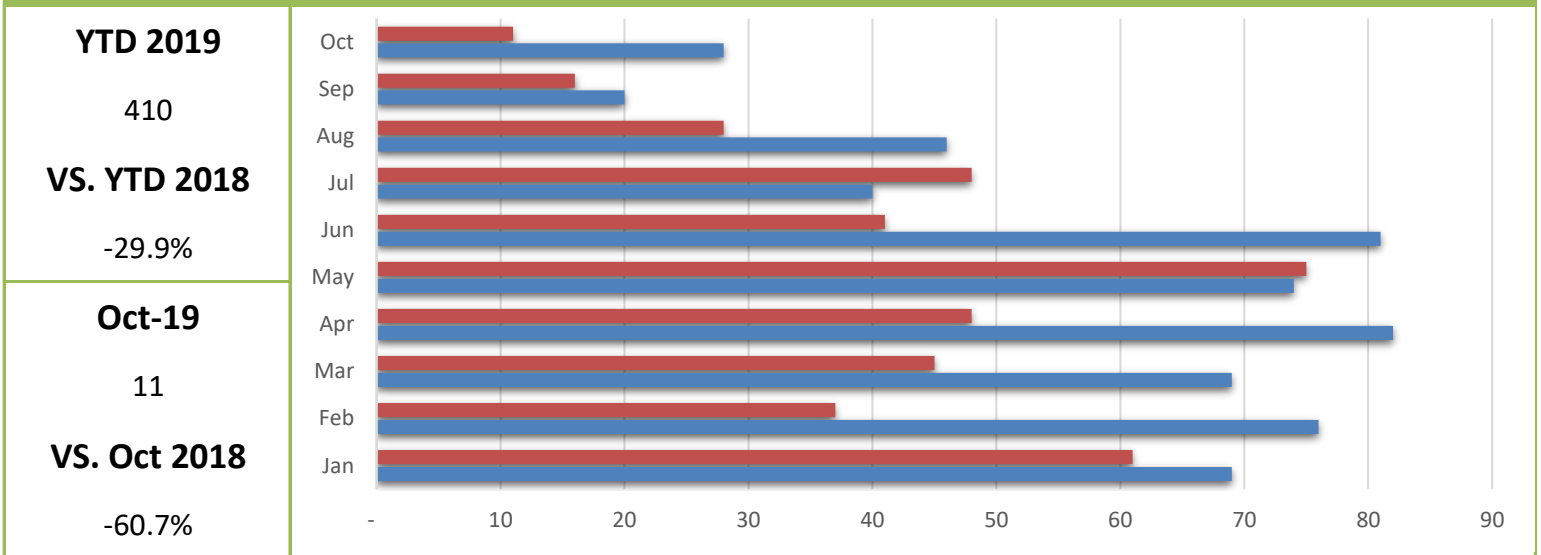
Dashboard January 2019 - October 2019



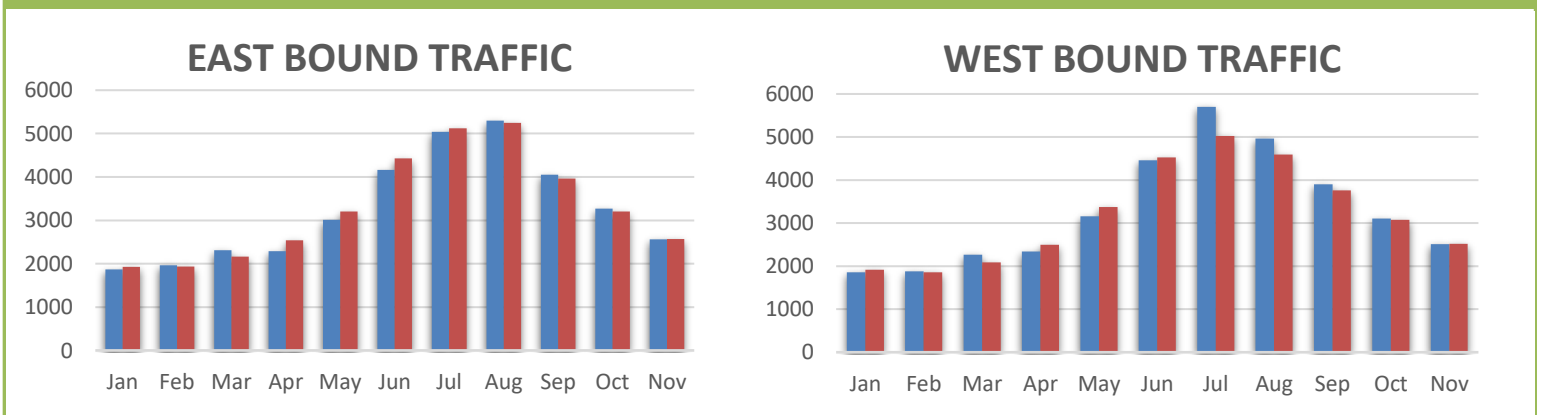
## Wall-Badlands.com Sessions



## Visitor Information Requests



## I-90 Traffic



<b>Oct-19</b>	3,200
<b>VS. Oct 2018</b>	-2.2%

<b>Oct-19</b>	3,073
<b>VS. Oct 2018</b>	-1.0%

# Wall-Badlands Area Chamber of Commerce

Dashboard January 2019 - October 2019

## Report Definitions:

**-YTD:** Year-To-Date

**-City Sales Tax Revenue:** The amount of sales, use, and municipal gross receipts tax paid to the city per month.

**-Visitor Spending:** Volume of general taxable sales reported by Tourism-related businesses.

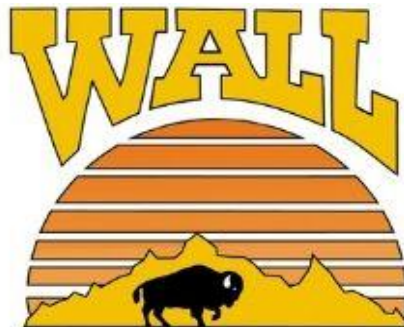
**-BBB Taxable Sales:** The one percent municipal gross receipts tax (BBB tax) is imposed on alcoholic beverages, eating establishments, lodging accommodations, admissions to places of amusement, athletic and cultural events.

**-Recreational Visits:** The total number of visitors through government attractions.

**-Web Sessions:** User interactions with the Chamber website that take place within any given time frame. A single session can contain multiple page views.

**-Information Requests:** Information requests are defined as the number of visitors who request printed information from the Wall-Badlands Area Chamber of Commerce office.

**-I 90 Traffic:** The average number of vehicles that travel on SD Interstate 90 in a day.



**Wall-Badlands Area Chamber of Commerce**

501 Main St. Wall, SD 57790

PO Box 527

wallchamber@gwtc.net