

Wall-Badlands Area Chamber of Commerce

Tourism Dashboard January 2019 - August 2019

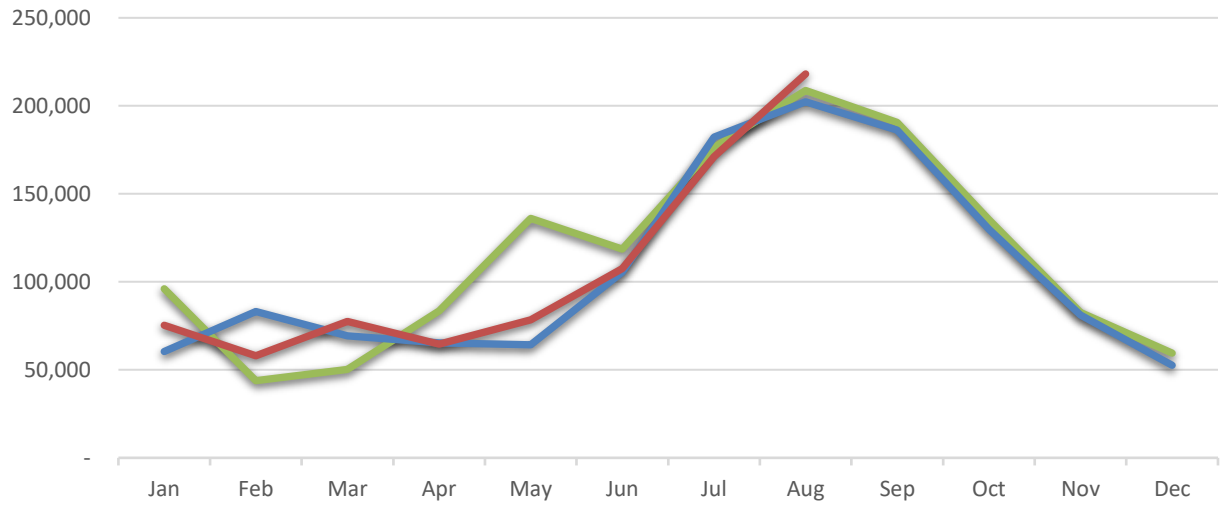
2017

2018

2019

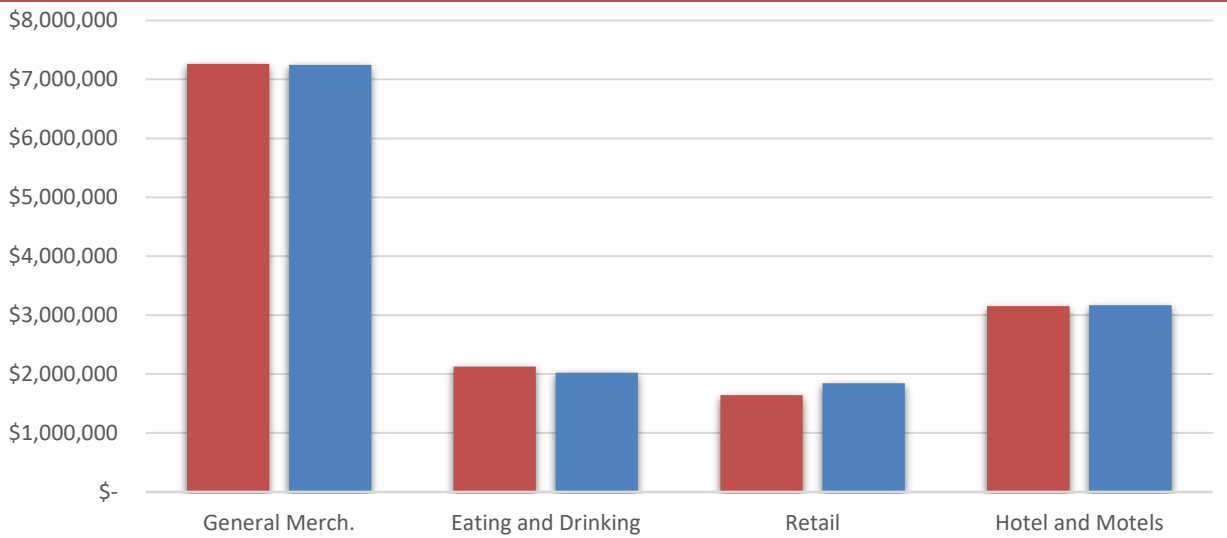
City Sales Tax Revenue

YTD 2019
\$850,489.79
VS. YTD 2018
2.1%
Aug-19
\$218,120.86
VS. Aug 2018
7.8%



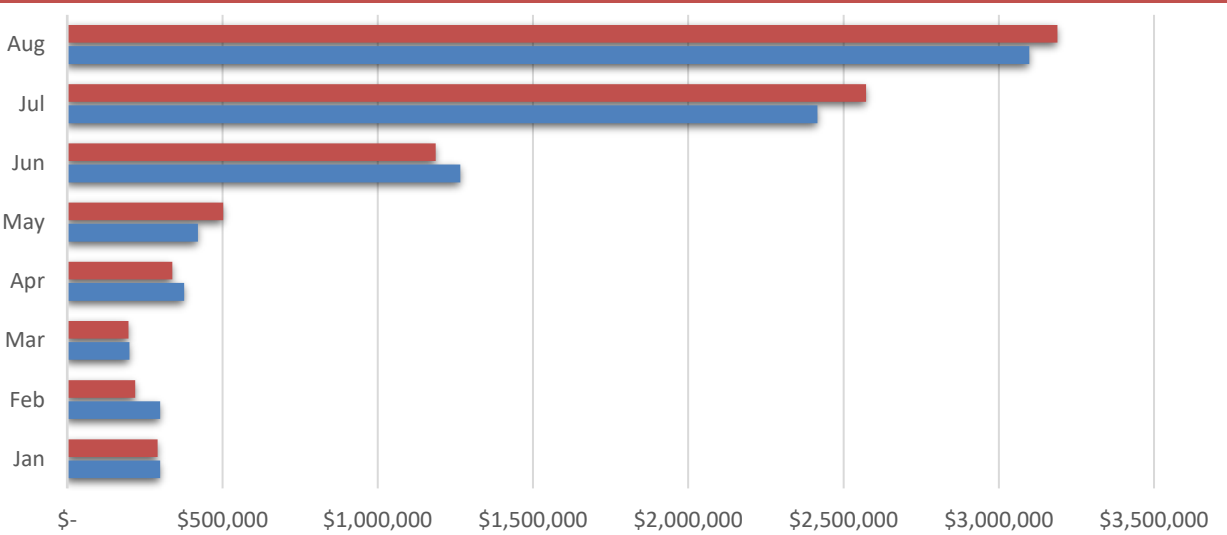
Visitor Spending - Year over Year

YTD 2019
\$14,186,278.53
VS. YTD 2018
-0.7%
Aug-19
\$5,498,240.96
VS. Aug 2018
-0.9%



BBB Taxable Sales

YTD 2019
\$8,494,970.53
VS. YTD 2018
1.4%
Aug-19
\$3,189,326.77
VS. Aug 2018
2.9%



Wall-Badlands Area Chamber of Commerce

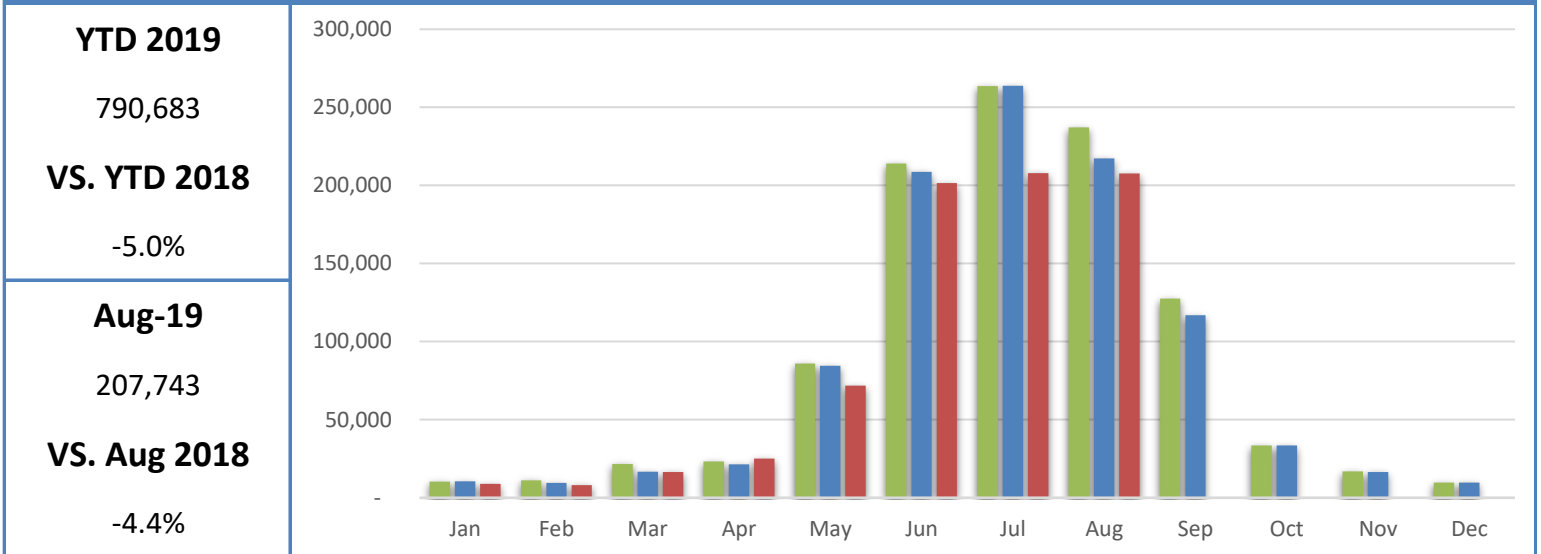
Tourism Dashboard January 2019 - August 2019

2017

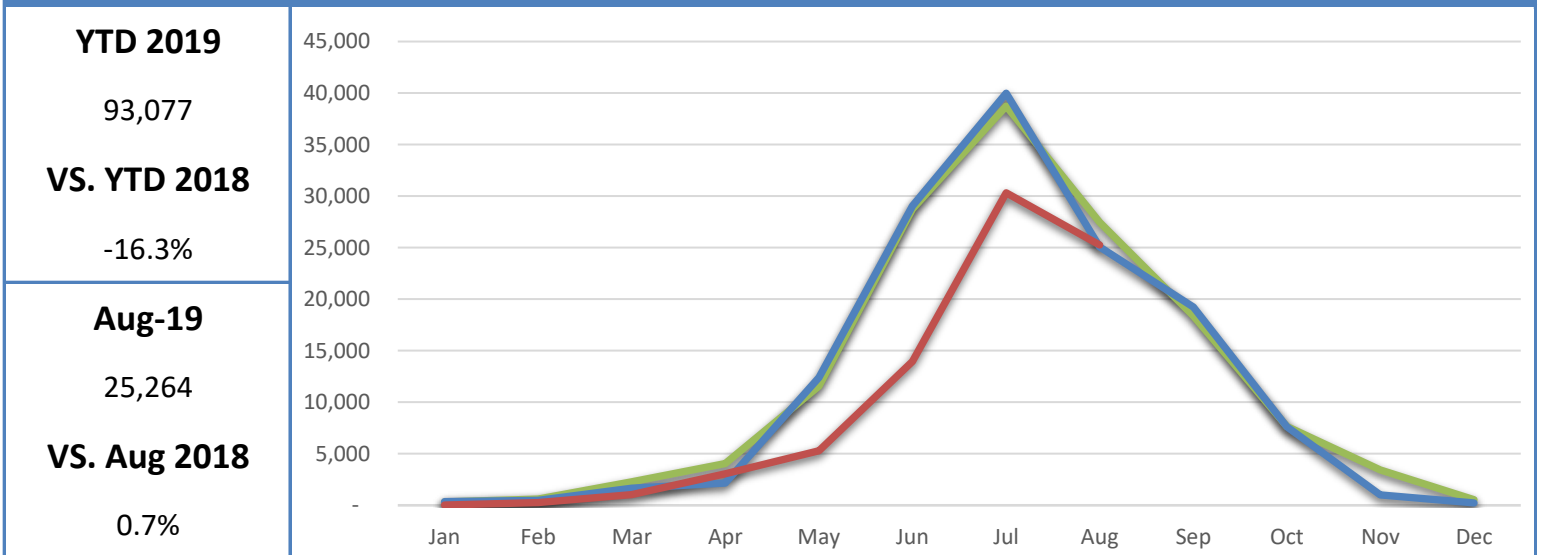
2018

2019

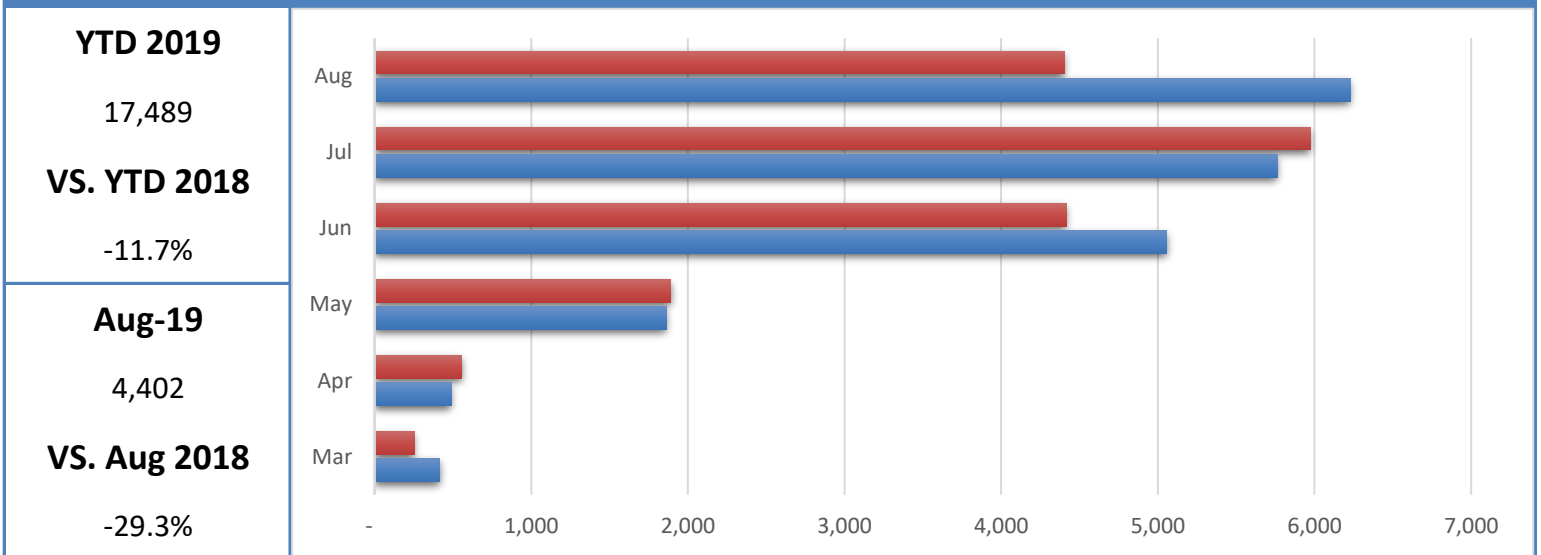
Badlands National Park Recreational Visitation



Minuteman Missile National Historic Site Recreational Visitation



National Grasslands Visitor Center Recreational Visitation



Wall-Badlands Area Chamber of Commerce

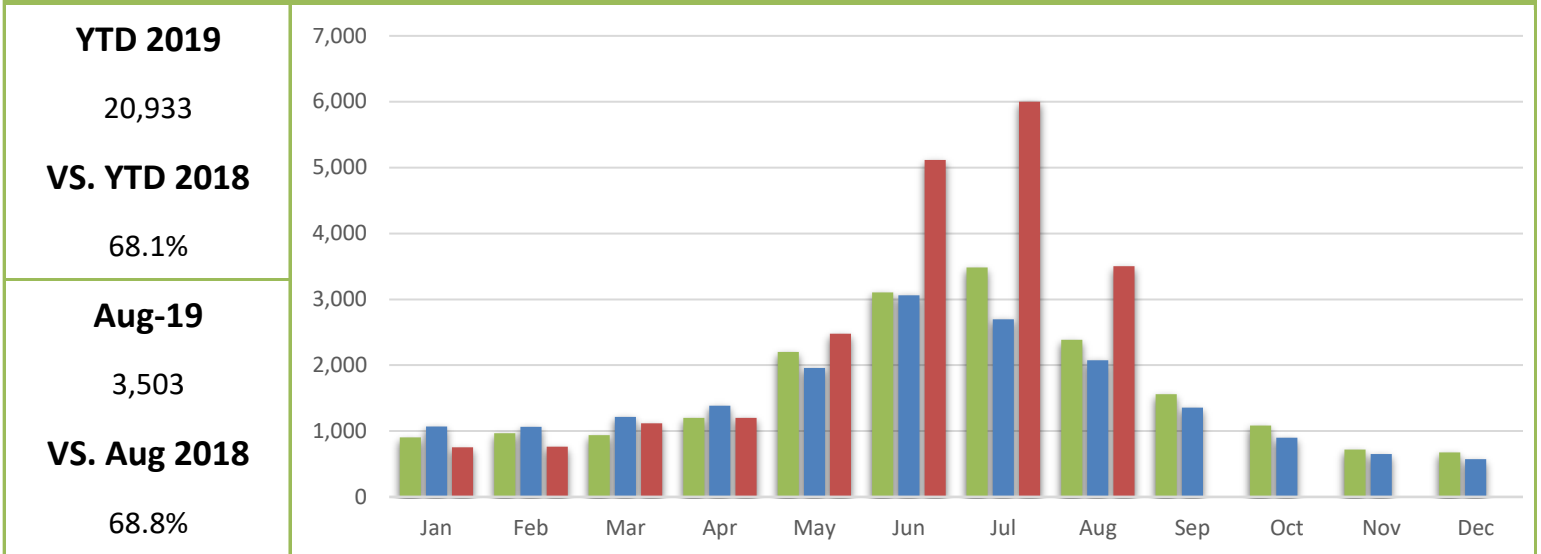
Tourism Dashboard January 2019 - August 2019

2017

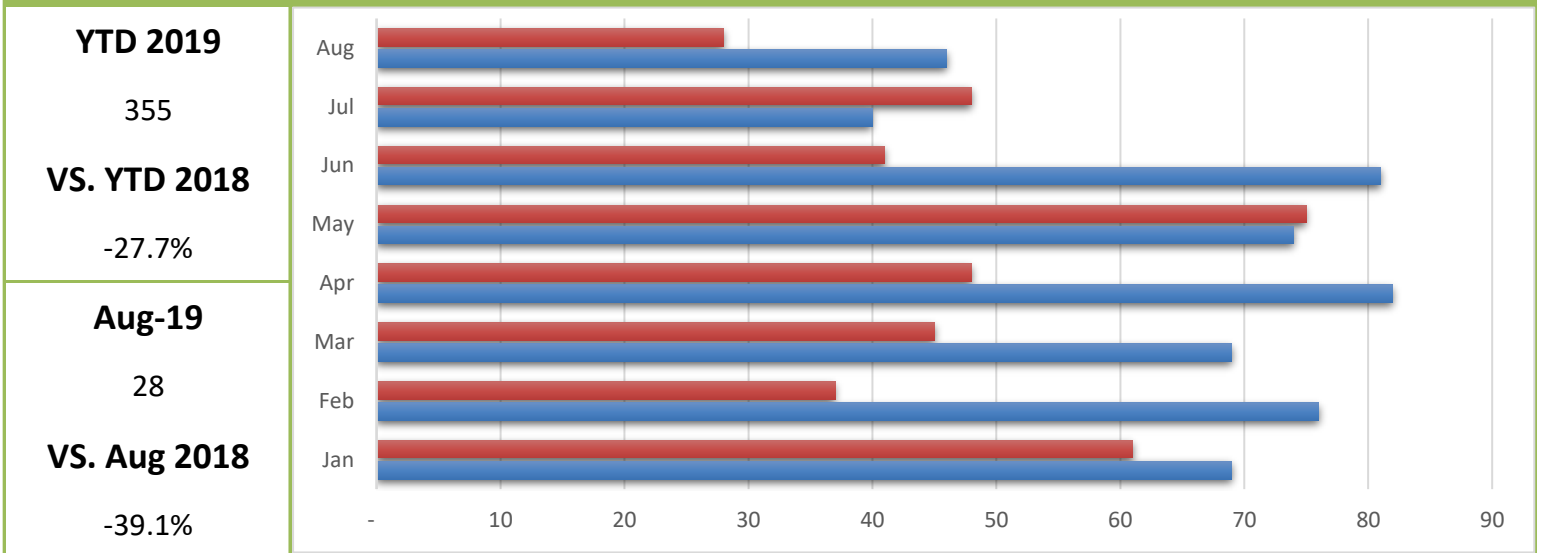
2018

2019

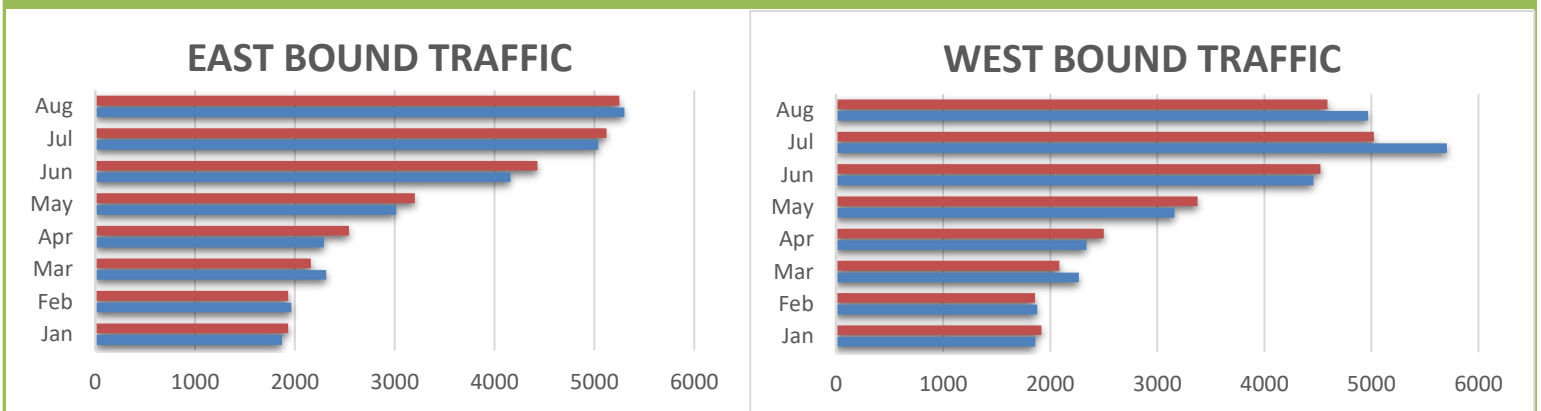
Wall-Badlands.com Sessions



Visitor Information Requests



I-90 Traffic



Aug-19	5,249
VS. Aug 2018	-1.0%

Aug-19	4,589
VS. Aug 2018	-7.6%

Wall-Badlands Area Chamber of Commerce

Tourism Dashboard January 2019 - August 2019

Report Definitions:

-YTD: Year-To-Date

-City Sales Tax Revenue: The amount of sales, use, and municipal gross receipts tax paid to the city per month.

-Visitor Spending: Volume of general taxable sales reported by Tourism-related businesses.

-BBB Taxable Sales: The one percent municipal gross receipts tax (BBB tax) is imposed on alcoholic beverages, eating establishments, lodging accommodations, admissions to places of amusement, athletic and cultural events.

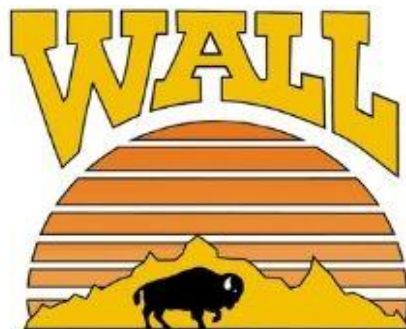
-Recreational Visits: The total number of visitors through government attractions.

-Web Sessions: User interactions with the Chamber website that take place within any given time frame. A single session can contain multiple page views.

-Information Requests: Information requests are defined as the number of visitors who request printed information from the Wall-Badlands Area Chamber of Commerce office.

-Occupancy: Rooms sold divided by rooms available multiplied by 100. Occupancy is always expressed as a percentage of rooms occupied from the first calendar day of the month to the last calendar day of the month as compared to the same month the previous year.

-I 90 Traffic: The average number of vehicles that travel on SD Interstate 90 in a day.



Wall-Badlands Area Chamber of Commerce

501 Main St. Wall, SD 57790

PO Box 527

wallchamber@gwtc.net